

WARRANTY

(Effective September 1, 2010)

HIX will automatically register the equipment on the date it was shipped to you or your distributor. If the equipment was not purchased directly from HIX, but through a distributor (either domestic or foreign), please keep a copy of their sales invoice showing the serial number and date it was sold/shipped to you with this warranty. In this case, we will use the distributor's invoice date as the beginning warranty date. **STAPLE A COPY OF YOUR RECEIPT TO THIS WARRANTY** and keep in a safe place to provide verification of your warranty should a problem occur. Thank you.

Please fill in the following information and attach a copy of your receipt for your records.

Date Purchased: _____ From: _____

Model #: _____ Serial #: _____

This warranty applies to equipment manufactured by the HIX Corporation (HIX), Pittsburg, Kansas, U.S.A. HIX warrants to the original purchaser, its Ovens and Dryers, Heat Transfer Presses, Mug Presses, Mug Glazer, Retensionable Screen Frames, Textile Printers, Spot Heaters, and Exposure Units against defects in workmanship and material, except for wear and tear for a period of "One Year" from the date of purchase. HIX warrants its Accessories, Reten Splines/Hardware/Tool Kit, and Shuttle for a period of 90 days from the date of purchase. Thermatrol and doughXpress products are covered under separate warranty.

In the event of a defect, HIX, at its option, will repair, replace or substitute the defective item at no cost during this period subject to the limitations of insurance and shipping costs stated below.

In the case of heat transfer presses (except the Hobby Lite), HIX warrants the heat casting for the "Life" of the machine for the original purchaser. If a part becomes obsolete at the time for repair, and/or cannot be reasonably substituted for, HIX will credit, at half the then current list price or last recorded price, only that part toward a new machine or any product HIX offers. This credit offer shall be the sole responsibility of the HIX Corporation in the event of an obsolete part.

This warranty does not cover belts, pads, mug wraps, canvas, rubber blankets, bulbs, glass, rod ends, turn buckles on printers or damages due to accident, misuse/abuse, alterations or damage due to neglect, shipping or lack of proper lubrication or maintenance. HIX shall not be responsible for repairs or alterations made by any person without the prior written authorization by HIX. This warranty is the sole and exclusive warranty of HIX and no person, agent, distributor, or dealer of HIX is authorized to change, amend or modify the terms set forth herein, in whole or in part.

In the case of a problem with the equipment identified herein, HIX Corporation should be contacted during regular business hours to discuss the problem and verify an existing warranty. HIX personnel will assist the customer to correct any problems which can be corrected through operation or maintenance instructions, simple mechanical adjustments, or replacement of parts. In the event the problem cannot be corrected by phone, and upon the issuance of a return authorization by HIX, the equipment shall be returned to HIX or an authorized service representative. All insurance, packaging and shipment/freight costs are solely the responsibility of the customer, and not that of HIX, and HIX shall not be responsible for improper packaging, handling or damage in transit. Contact HIX customer service for complete return authorization information. Correct shipping boxes are available from HIX.

This expressed warranty is given in lieu of any and all other warranties, whether expressed or implied, including but not limited to those of merchantability and fitness for a particular purpose, and constitutes the only warranty made by HIX Corporation.

In no event shall HIX's liability for breach of warranty extend beyond the obligation to repair or replace the nonconforming goods. HIX shall not be liable for any other damages, either incidental or consequential, or the action as brought in contract, negligence or otherwise.

This warranty gives you specific legal rights and you may also have other rights which vary from state to state.



Manufacturers of the Finest Quality Textile and Graphics Screen Printing and Heat Transfer Equipment

1201 E. 27th Terrace • Pittsburg, KS 66762 • U.S.A.

Web site: www.hixcorp.com • Phone: (800) 835-0606 • Fax: 620-231-1598

E-Mail: customerservice@hixcorp.com • E-Mail: sales@hixcorp.com

HOSS

High Output Super Shuttle

OWNER'S MANUAL



HOSS

HIX CORPORATION
For Customer Service, Call 1-800-835-0606
or Visit www.hixcorp.com

CONTENTS

Receiving and Installation	2
Operation	3-5
Transfer Application	5-6
Troubleshooting	7
Warranty	8

BEFORE warranty repair you MUST get Prior Authorization:

RECEIVING & INSTALLATION

INSPECTION

DO NOT SIGN FOR THE SHIPMENT IF YOU SEE ANY CRATE DAMAGE. Inspect your machine for hidden shipping damage. Contact the delivery company immediately, should you find damage.

UNPACKING

Remember to save all packing materials. You may need these for shipping your machine in the future. After disassembling the crate save the skid and side boards.

SETUP AND INSTALLATION INSTRUCTIONS

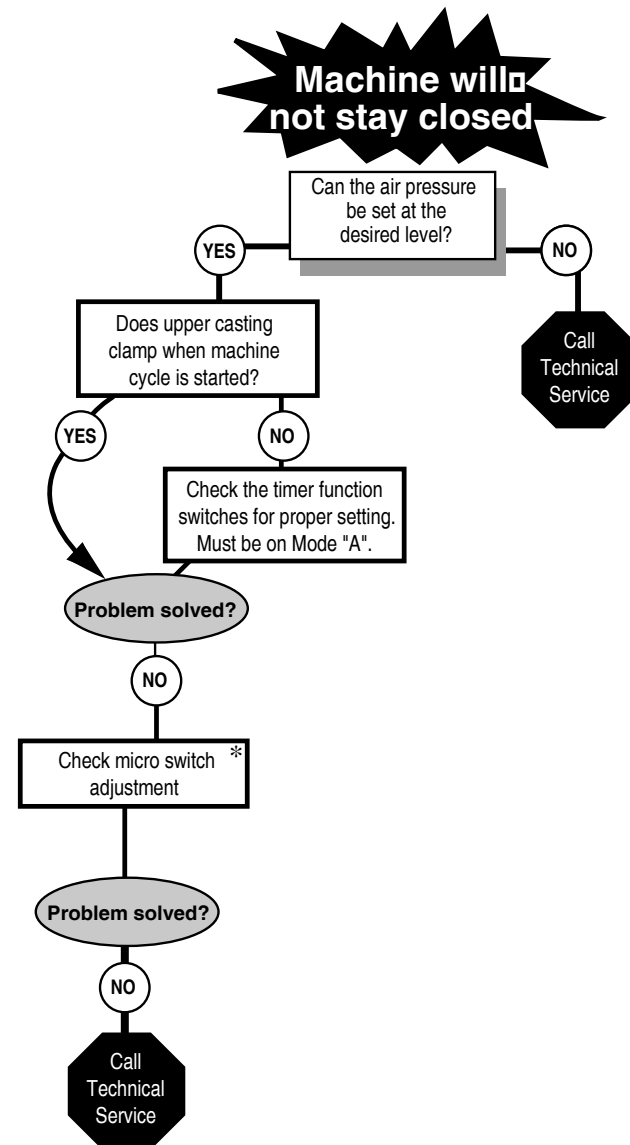
1. Remove unit from shipping crate and base. Do not use a fork lift under the machine to remove from shipping skid to avoid damage to the air cylinders. **Recommended:** Use at least 4 or more people capable of lifting 150 lbs. each to lift at each corner and the bars, or use a forklift **with extensions** long enough to extend past the width of the HOSS's legs. Place forks under horizontal bottom leg support. Lift with caution.
2. Place unit in desired operating location.
3. Level the machine pads on each corner so that the machine sits in a level position and at the desired operation height (Check that the machine is level with a carpenter's level).
4. Supply 100 - 115 PSI (7-8 bar) air supply to machine with 3/8" (10mm) diameter hose, minimum. Air requirements 8 CFM (226 L) per minute at 100 PSI. Air inlet is located on the left side frame support leg (when facing the control panel).

NOTE: It is strongly recommended that an external air filter and water trap be installed at the machine's air inlet connection. Compressed air is dirty. It has 'stuff', primarily moisture, residues from oil and smoke and whatever else is in the air. Compressors or 'shop air' may have filtered air and/or an "AIR DRYER" after the compressor. IF your air is not filtered and dried, YOU MUST FILTER THE AIR and REMOVE THE WATER AND 'STUFF' FROM THE AIR, before putting it in most air operated machines, including our press. There are small valves and ports that can become blocked from moisture and residue in compressed air, causing your press to malfunction. An external air filter and water trap must be installed at the machine's air inlet connection, if your air is not filtered. Damage to the machine's internal air operated components can occur that will not be covered under warranty. Combination air filter/water traps are available at any major hardware store or may be purchased directly from HIX (part #71145).

5. Supply voltage and current per wiring diagram.
6. Note this is an industrial piece of equipment with an automatic cycle. All safety guards must be left in place at all times when the machine is operating. Operating without the guards will present access to pinch and crush points and thus pose dangerous exposure to the operators.

TROUBLESHOOTING

WARNING: Before making repairs, be sure on/off switch is off and machine is unplugged!



*Customer Service Tech Sheets are available for this step. Visit www.hixcorp.com to print or call 620-231-8568 and we will send you one. Parts ordering is available on-line.

TRANSFER APPLICATION

FIRST, THE BASICS:

1. Be sure to set the heat transfer machine to the transfer manufacturer's recommended Temperature, Time and Pressure settings. If you don't have these specifications, contact your transfer supplier for this information and any other special application instructions as many of the new "High Tech" transfers require significantly different settings and/or application techniques than those from years past.
2. When you start up your press for the first time each day, preheat the pad for a minute. If the press has sat for 3-5 minutes without use, be sure to "preheat" the pad for 10-15 seconds before loading the shirt or making the first transfer.
3. Be sure the T-shirt fabric is void of any moisture which can reduce the chance of a successful transfer.
4. With all of the above recommendations, try making a transfer.
5. If successful, great! You are on your way to making some serious money with your transfer machine!
6. If you have an area that isn't transferring completely or as you would like it to, follow these steps to determine the problem.
 - Try increasing the pressure on the machine by 10-20%
 - Recheck your temperature required and the press readout. You may want to increase the temperature 10 degrees.
 - Try increasing the application time by 2-4 seconds
 - If after trying these things there is still a "specific" area (say over in one corner of the transfer) that isn't coming out as you would like it to, then try the same type transfer on a scrap shirt but rotate the transfer 180 degrees (changing the failure location) If after doing this the problem area is in the same physical location on the machine, then you probably have a problem with the pad or possibly a warped platen if the machine has ever overheated severely. On the other hand if the transfer failed in the same area on the transfer (after changing the location of where the problem had previously been occurring), then you most likely have a problem with the transfer or it's application settings (Temperature, Time or Pressure) and you should contact your transfer supplier to discuss the problem.

Following these basic guidelines can help you be more successful with each and every transfer!

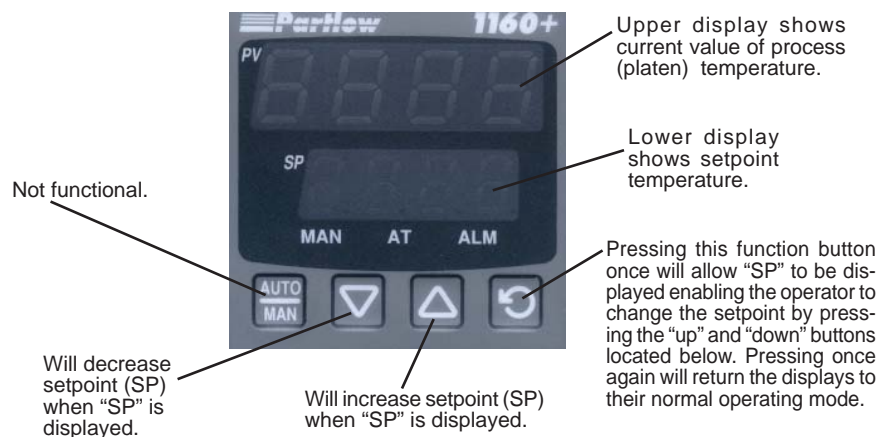
RECEIVING & INSTALLATION

The HOSS should never be left unattended while cycling. Extreme caution and awareness should be exercised when operating this machine. **Children should not be allowed access to the machine.** Heated platens can cause severe burns. Do Not set objects on the machine. To avoid electrical shock use only in dry locations. Service only by qualified technicians.

OPERATION

1. Raise the lever on the operator switch marked "Circuit Breaker" located on the front of the control panel to the "ON" position.
2. Ensure that all Emergency Stop (E-Stop) operator buttons are released. Two E-stops are located on each machine in the event that the machine needs to be stopped for any reason. If either of the buttons are pressed in, they will latch and all machine operation will halt. To reset the E-stop, gently push the operator button in and "Twist" the button in a "Clockwise" direction and the button will pop back out to its' normal operating position.
3. Press the "Yellow" operator button on the front of the control panel marked "Power On" to activate power to the unit. If the lower platens are not in their "Base" or "Home" position, they will move to the required starting location.
4. At this time you may adjust the following settings as required by the particular type of transfer you are using and it's specific requirements.
 - Heat Platen Temperature - This may be adjusted for each station with the digital temperature controller located on the control panel side of the machine.

DIGITAL TEMPERATURE CONTROL



OPERATION

- Clamping Pressure - This pressure is pre-set at the factory to 90psi(6.2bar) and can be adjusted for each station by adjusting the air regulators located on the front of the control panel. These regulators and the corresponding gauges only operate while the heat platens are down (pressing). At all other times, the gauges will read zero pressure. See Instruction #8 for setting instructions.
 - Clamping Time - This may be adjusted by adjusting the dwell time on the "Timer" located on the front control panel.
5. Once you have all the above parameter adjustments set to the required setting as suggested by the transfer manufacturer, you can proceed to the next step. Note it will take approximately 20 minutes for the heat platens to come up to operating temperature. This is normal.
 6. Before continuing, note there are two ways to "Stop" the machine.
 - **Emergency Stops** - Pressing to activate either of the two "Emergency stops" (one Red/Yellow colored Mushroom operator located on each side of the machine between the shuttle platen stations), will immediately stop or halt all operation of the machine. If the machine is in the middle of a pressing cycle, the heat platens will release and return to the "open" position. These stops should only be used in a situation where Emergency Stop is ever activated, you will need to again press the "Yellow" operator marked "Power On" to regain operation of the machine.

NOTE: An E- Stop must be reset. (See #2 on page 2).

- **Cycle Stop** - The "Red" operator button marked "Cycle Stop" located on the control panel front will interrupt the machine cycle. When this operator is pressed, the heat platens will open after finishing their timed press cycle.

NOTE: This is the normal way to shut down operation of the HOSS.

7. Now that you know how to stop the machine, you are ready to start the automatic cycle. To begin the cycle, press the "Green" operator button "Start Cycle". Once pressed the lower platens will begin moving and the pressing cycle will start once a lower platen is under a heat head. At the end of the elapsed time as set on the timer, the heat heads will release and the platens will "Shuttle" to the opposite position. When you want it to stop (unless an emergency), the best way to interrupt the cycle is to press the "Cycle Stop" operators. If "cycles stop" is pressed, machine cycle can be continued by pressing Green "Start Cycle Operator Button." If there is an emergency, one of the Emergency Stop operators can be activated.
8. While the heat platens are warming, the clamping pressure can be set. Start the cycle by pressing the green "Cycle Start" operator button. When the heat platens begin to press, the air gauges will indicate the clamping pressure. To adjust the pressure, pull gently out on the air regulator knob and turn it until the desired pressure is indicated,

OPERATION

turning "Clockwise" to increase pressure and "Counter-Clockwise" to decrease pressure. THE MAXIMUM ALLOWABLE PRESSURE IS 90PSI(6.2bars)!!

9. It is recommended to allow the machine to cycle for a few minutes after the heat platens have reached the desired operating temperature before starting to apply transfers. This will allow the lower platens to warm up properly and will provide a better quality transfer.

NOTE: Allow to set 5 minutes at operating temperature.

10. When you have finished for the day and have removed all products from the HOSS, push the "Cycle Stop" button. After the HOSS stops cycling switch the "Circuit Breaker" to the "Off" position.
11. This is an industrial piece of equipment with an automatic cycle. All safety guards must be left in place at all times when the machine is operating. Operating without the guards will present access to pinch and crush points and thus pose dangerous exposure to the operators. The HOSS should never be left unattended while cycling. Extreme caution and awareness should be exercised when operating this machine. Children should not be allowed access to the machine.

TRANSFER APPLICATION

The HOSS is ideal for Heavy High Volume applications. The HOSS was designed for two people to operate for max production. One person on each side.

1. Align garment on the lower platen and smooth out the wrinkles.
2. Set the timer to the desired time setting. **Always** consult your specific transfer recommendations. Typical setting are: Cold Peel - 350°F (177°C), 15 seconds and Hot Split - 375°F (190°C), 10 - 12 seconds.
3. Position the transfer, then press the cycle start switch to start the cycle operation. At the end of the pre-set time, the platens will cycle, and provide a lower with shirt and hot transfer to you.
4. Continuously peel the paper off the transfer away from your garment. Successful transfer work depends on the correct balance of time, temperature and pressure. The type and thickness of the material and the kind of transfer being used will determine what settings are necessary.

If a hot peel/split transfer is being applied, immediately peel the paper after the machine has opened. DO NOT allow the transfer to cool. If a cold peel transfer is being applied, rub the transfer with a chalk board eraser or cloth and allow to cool for 5 - 10 seconds before removing the release paper.

When you fail to make a successful transfer you can wonder, "Is it the machine's fault, or the transfer, wrong settings or what"?