

OPERATOR'S MANUAL **B-250 & FH-3000**

Manual Clamshell with Pressure Readout
"Cap" & "Flat/Cube" Heat Transfer Machines

EVO TOUCH



FH-3000



B-250

For Customer Service:
Call **1-800-835-0606** or Visit ***hixcorp.com***

HIX CORPORATION



CONTENTS

<i>Receiving & Setup</i>	3
<i>Power</i>	4
<i>User Adjustable Settings</i>	5
<i>Machine Presets</i>	6
<i>Platen Pressure</i>	7-8
<i>Brackets, Platens & Attachments</i>	8-9
<i>Transfer Application</i>	10
<i>Troubleshooting</i>	11-14
<i>Repairs & Maintenance</i>	15
<i>Parts List</i>	16-19
<i>Warranty</i>	20

BEFORE warranty repair you MUST get Prior Authorization



RECEIVING & SETUP

SHIPPING OR RETURNS

NOTE *Save all of your shipping/packing material. Do not risk costly shipping damage, ship only in original box.*

1. Fasten machine to plywood shipping base with bolts provided.
2. Tie or tape handle securely to base.
3. Place in original box, and put side liner and top liner in place. Fold flaps and seal the box. (Additional bottom boards, box and liners may be obtained from your supplier for a normal cost.)

UNPACKING

Remember to save all packing material - including box, liner and board. You may need these for shipping your machine or if a repair is necessary in the future.

INSPECTION

Inspect your machine for hidden shipping damage. Contact the delivery company immediately, should you find damage.

INSTALLATION

1. Remove plywood shipping base bolt and screw on feet or affix self-adhesive rubber feet provided.



CAUTION: Handle must be tied to base before moving or shipping.

2. Carefully cut tape/wrap holding the machine closed.
3. Plug the machine into the correct grounded electrical outlet.

WARNING: When using an extension cord, use 12 or 14 ga.-3 conductor.
Maximum length, 25' (7.762 m).

4. **B-250:** Install PTFE blanket onto bracket by opening the press and sliding the loops on each end of the PTFE blanket over the ends of the PTFE bracket before use. (See Below)

Blanket Loop
on bracket
end holders



POWER

TURNING THE POWER “ON”

1. Once the machine is plugged into power, the display will show a “Red Icon” as shown below. To turn the power on to the machine, simply press the Red Icon.



2. The display will then come on and look similar to what is shown below.

To turn the Power “OFF” to the machine, simply press the Green “Power” Icon in the upper right corner of the display and the machine will turn “OFF.”



To adjust the temperature or time settings, simply press the “UP” or “DOWN” arrows to change the values.

As the temperature is warming up from a cold start, the temperature digits will be RED when the heat platen temperature is more than 10 degrees away from desired setpoint temperature.

When the platen temperature is less than 10 degrees, but more than 5 degrees from the desired setpoint the temperature displayed will be YELLOW.


When the platen temperature displayed is within 5 degrees of the desired setpoint, the temperature digits will be GREEN.

When the actual platen temperature reaches the setpoint, the controller will BEEP.

3. A little “Red Dot” shown above in the lower left corner of the temperature display window represents the “Heat Light.” This indicator will be on when the controller is applying power to the heating element. It is normal for this indicator to flash on and off as heat is required.

USER ADJUSTABLE SETTINGS

USER ADJUSTABLE SETTINGS

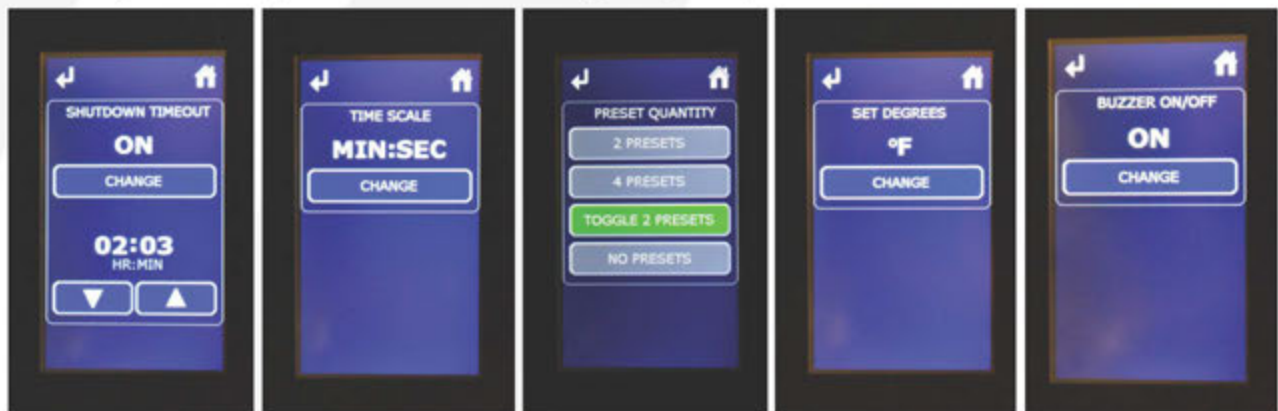
Pressing the "GEAR" Icon  in the upper left corner of the Home Screen will switch the screen to the user settings menu, shown below.



Pressing the "Back Arrow" Icon in the upper left corner of the display will take you to the previous screen.

Pressing the "Home" Icon in the upper right corner of the display will take you to the "HOME" Screen.

Pressing any of the USER SETTINGS buttons will take you to one of the screens shown below where you can adjust the machine settings to your preferences.



Once you have made the desired adjustments, press the "Back Arrow" or "Home" Icon.

Any changes in any of the settings or values you have made will be automatically stored as you leave that screen.

MACHINE PRESETS

PRESETS FOR TIME & TEMPERATURE SETTINGS

The controller has several Time and Temperature Preset options (No Presets, Two Presets, Four Presets, Toggle Two Presets) which are selectable in the "User Adjustable Settings" as outlined on the previous page.



ON THE HOME SCREEN

If one of the buttons is "GREEN" then that button is the ACTIVE time and temperature preset on the controller. See below:

2 presets option



4 presets option



If you wish to make an adjustment to the time or temperature, simply press the UP/DOWN arrows next to the Time or Temperature values to change the number to the new setting desired.

NOTE: You will notice when you change either the Time or the Temperature away from the preset values, all the preset buttons will turn "Gray."

To store the new Time or Temperature value(s) in a preset button location, simply press and HOLD on the desired preset button for 2 seconds. Once the new values are stored, the button will turn GREEN and the controller will BEEP to acknowledge the new values are stored.

To "recall" a preset, simply touch on the desired preset button and the Time and Temperature setting stored in that location will be recalled and displayed in the Time and Temperature values.

PLATEN PRESSURE

PRESSURE CONTROL KNOB

The pressure control knob is located on the front stem of the machine and should be set so that the head will lock down firmly. Pressure is reduced by turning knob (with machine open) counter-clockwise and increased by turning is clockwise.

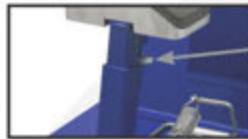
FH-3000 pressure knob is located on the lower platen stem near the base.

B-250 pressure knob is located on the lower platen stem near the top, just under the lower platen head.

FH-3000
Pressure knob
located near base



B-250
Pressure knob
located near top



PLATEN PRESSURE READOUT

The amount of platen pressure being exerted on the transfer and substrate can be monitored on the controller. When the machine is closed, the platen pressure is expressed in a numerical value between 0-9 on the controller home screen. Values of 0-3 indicate "light" pressure, 4-6 "medium" pressure and 7-9 "heavy" pressure. If the value exceeds 9, then "Pressure High" will appear on the display indicating that the maximum value can be displayed has been exceeded.

WARNING: Excessive pressure can cause structural damage, voiding the machine warranty!

PRESSURE TOGGLE BOLT

Located on the top of the handle is a toggle bolt lock nut. This nut may need to be adjusted if the press is either hard to open, hard to close or the handle will not lock into the down position when in use. To adjust the toggle bolt lock nut use an end wrench to turn the locknut 1/4 turn at a time until press closes properly.

Toggle Bolt &
Lock Nut



If the machine is too hard to open:

1. Hold the toggle bolt in place and turn the nut counterclockwise, as viewed from the top, to loosen the toggle bolt lock nut.
2. Turn the toggle bolt 1/4 clockwise, as viewed from the top.
3. Test by closing the machine down. Repeat Step 2 until the machine closes comfortably and locks down securely.
4. If satisfied with lock down, hold toggle bolt in place and tighten the lock nut and recheck operation.

NOTE: If the nut is turned too far, the machine will not stay locked when closed.

Continued on next page

PLATEN PRESSURE

(continued)

If the toggle bolt does not contact the main arm and excessive pressure is required on the handle.

1. Reduce the pressure by turning the pressure knob counterclockwise to relieve lower platen pressure. Recheck operation.

If the toggle bolt does contact the main arm but the handle won't lock down:

1. Hold the toggle bolt in place and turn the nut counterclockwise, as viewed from the top, to loosen the toggle bolt lock nut.
2. Turn the toggle bolt 1/4 counterclockwise, as viewed from the top.
3. Test by closing the machine down. Repeat Step 2 until the machine closes comfortably and locks down securely.
4. If satisfied with lock down, hold toggle bolt in place and tighten the lock nut and recheck operation.

NOTE: If machine is still not closing correctly, contact customer service for more information.

Toggle Bolt & Lock Nut



HOLD DOWN BRACKETS

(B-250 MODELS)

The B-250 press features two hold down brackets to ensure that the substrate and transfers do not move during application.

The spring-loaded cap hold down bracket, located on the base of the machine, is used to hold the cap/hat securely on the lower platen before applying the transfer.

1. Hook the back of the cap/hat on the lower bracket.
2. Then slip the front of the substrate over the lower platen, gently pulling upward to make sure the substrate clears and then is held securely on the lower curved platen.

NOTE: Lower platens should be changed to fit substrates for best results. Replacement lower platens, and pad kits are available for purchase.

The upper transfer hold down bracket assembly is unique as it allows the user to place a transfer without danger of movement before the heat is applied.

1. As the operator closes the press, the transfer hold down blanket reaches the substrate first.
2. Continue to safely close the press, to apply the heat to the substrate.

NOTE: All heat presses should be handled carefully as burns may occur if hot surface is touched. Replacement transfer hold down bracket & blankets are available for purchase.



Spring-loaded cap hold down bracket

Transfer hold down bracket

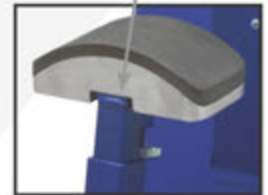


INTERCHANGEABLE CAP PLATENS (B-250 MODELS)

The B-250 comes with 3 interchangeable cap platens. Ball, Golf(Standard), and Youth sizes can be used for a variety of projects including sleeves and care tag placement, as well as, balls and face masks. Due to their unique shape and sizes, it may be necessary to change out the lower platen for a different size depending on the project.



Platen Bolt
on bottom



To replace the lower platen:

1. With a 1/2 inch end wrench, loosen and remove the bolt on the bottom of platen.
2. Place new platen on lower support arm, using the groove in the bottom of platen, keep the new platen centered on lower support arm.
3. Use the slot in support arm to center the lower platen front to back and tighten 1/2 inch bolt on the bottom before use.

FLAT/CUBE ATTACHMENT (FH-3000 MODELS)

The FH-3000 press comes standard with the flat platen assembly. It does features two interchangeable lower platen attachments (cube attachment is an additional purchase). These attachments help to ensure that flat and dimensional substrates do not move during application.

To replace the lower platen:

1. Lift lower platen off of support stem and replace with new lower platen assembly.

NOTE: Additional cube and replacement/additional flat lower platens available for purchase.



Optional purchase
3.5" cube attachment



Standard flat attachment

TRANSFER APPLICATION

The **120 volt models** have a slower heat recovery (i.e. 18-20 seconds @ 375°F).

The **220 volt models** are recommended for quicker cycle times (i.e. 10 seconds @ 375°F).

1. Set the temperature, time, & pressure to the desired settings as instructed. **Always** consult your specific transfer recommendations. Typical settings are; **Cold Peel**: 350°F (177°C), 15 seconds and **Hot Split**: 375°F (190°C), 10-12 seconds.

2. Align substrate on lower platen. Smooth wrinkle from garments.

NOTE: Wrinkles may be removed by bringing the heated platen in contact with the garment for a few seconds before the transfer is positioned.

3. Position the transfer in the desired location on the substrate.

NOTE: The transfer image should be "mirrored" before transferring except when transferring to substrates where the image shows through, i.e. glass tiles and cutting boards.

TIP: When transferring double sided or sublimation transfers to garments, always place a sheet of transfer paper or a PTFE sheet between the layers of the garments to avoid bleed through or reheating of the applied transfer.

4. Pull the handle down until the handle locks.

NOTE: Do not fold the transfer back on itself. Successful transfer work depends on the correct balance of time, temperature and pressure. The type and thickness of the material and the kind of transfer being used will determine what settings are necessary.

For hot peel/split transfers, immediately peel the paper after the machine has opened.

DO NOT allow the transfer to cool. For cold peel transfers, rub the transfer with an eraser or cloth and allow to cool for 5-10 seconds before removing the release paper.

TROUBLESHOOTING

NOTE: Specific application instructions are enclosed with transfers.

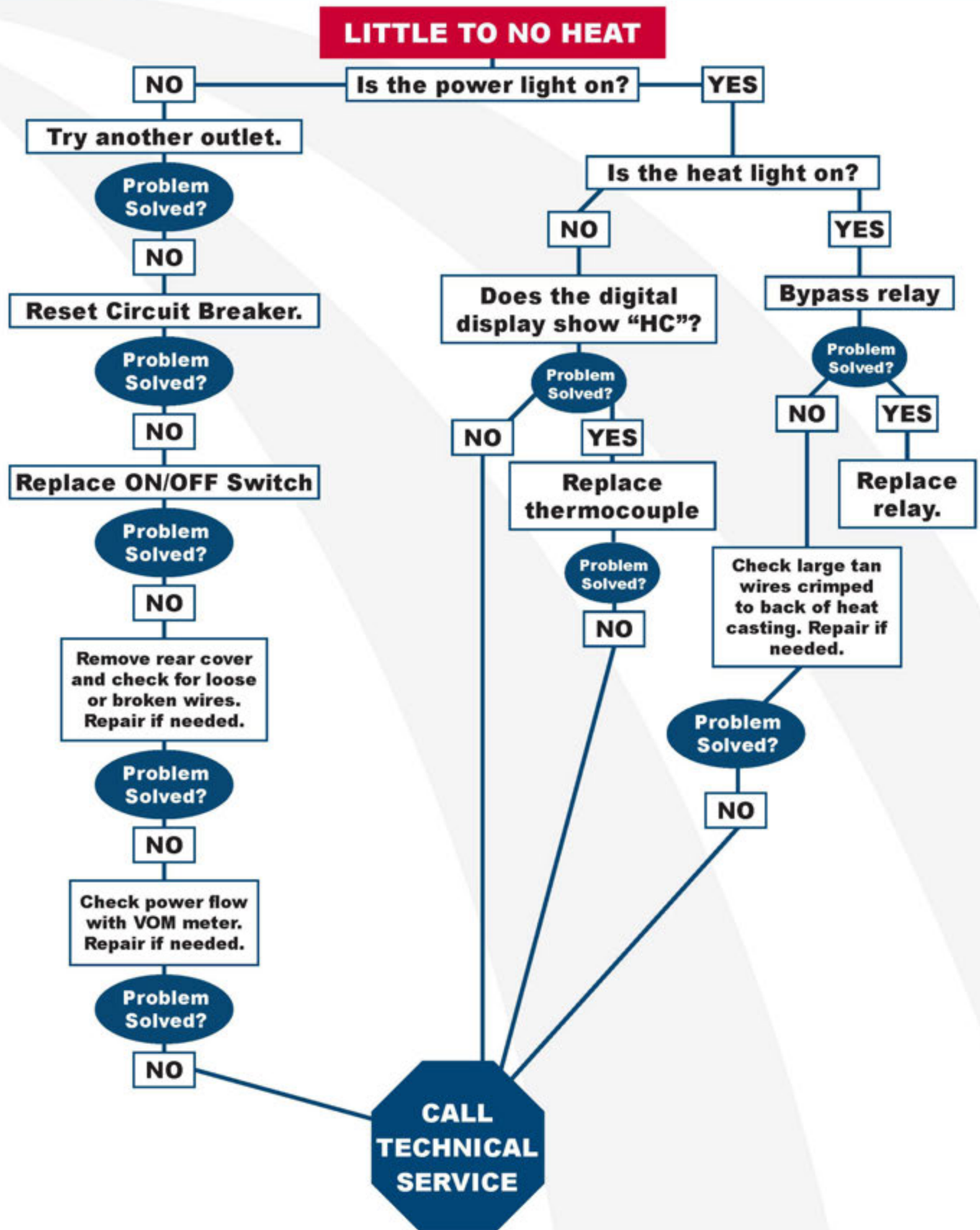
When you fail to make a successful transfer you can wonder, “Is it the machine’s fault, or the transfer, wrong settings or what”?

FIRST, THE BASICS

1. Be sure to set the heat transfer machine to the transfer manufacturer’s recommended Temperature, Time and Pressure settings. If you don’t have these specifications, contact your transfer supplier for this information and any other special application instructions as many of the new “High Tech” transfers require significantly different settings and/or application techniques than those from years past.
2. When you start up your press for the first time each day, preheat the pad for a minute. If the press has sat for 3-5 minutes without use, be sure to “preheat” the pad for 10-15 seconds before loading the shirt or making the first transfer.
3. After the shirt is positioned and centered on the preheated pad, “pre-press” the shirt for 3 seconds to take the wrinkles out and more importantly, release any excess moisture out of the T-shirt fabric which can reduce the chance of a successful transfer.
4. With all of the above recommendations, try making a transfer.
5. If successful, great! You are on your way to making some serious money with your transfer machine!
6. If you have an area that isn’t transferring completely or as you would like it to, follow these steps to determine the problem.
 - Try increasing the pressure on the machine by 10-20%
 - Recheck your temperature required and the press readout. You may want to increase the temperature 10 degrees.
 - Try increasing the application time by 2-4 seconds
 - If after trying these things there is still a “specific” area (say over in one corner of the transfer) that isn’t coming out as you would like it to, then try the same type transfer on a scrap shirt but rotate the transfer 180 degrees (changing the failure location) If after doing this the problem area is in the same physical location on the machine, then you probably have a problem with the pad or possibly a warped platen if the machine has ever overheated severely. On the other hand if the transfer failed in the same area on the transfer (after changing the location of where the problem had previously been occurring), then you most likely have a problem with the transfer or it’s application settings (Temperature, Time or Pressure) and you should contact your transfer supplier to discuss the problem.

Following these basic guidelines can help you be more successful with each and every transfer!

TROUBLESHOOTING



TROUBLESHOOTING

MACHINE OVERHEATS

Does heat light remain on constantly when overwhelming?

NO

Problem Solved?

NO

CALL
TECHNICAL
SERVICE

MACHINE WON'T STAY CLOSED

Adjust pressure

Problem Solved?

NO

Adjust toggle bolt

Problem Solved?

NO

CALL
TECHNICAL
SERVICE

Platen pressure indicator not working properly.

Does the platen pressure display show "0" when the press is locked down?

NO

Does the display read "Pressure High"?

Problem Solved?

Try decreasing the pressure

Problem Solved?

NO

YES

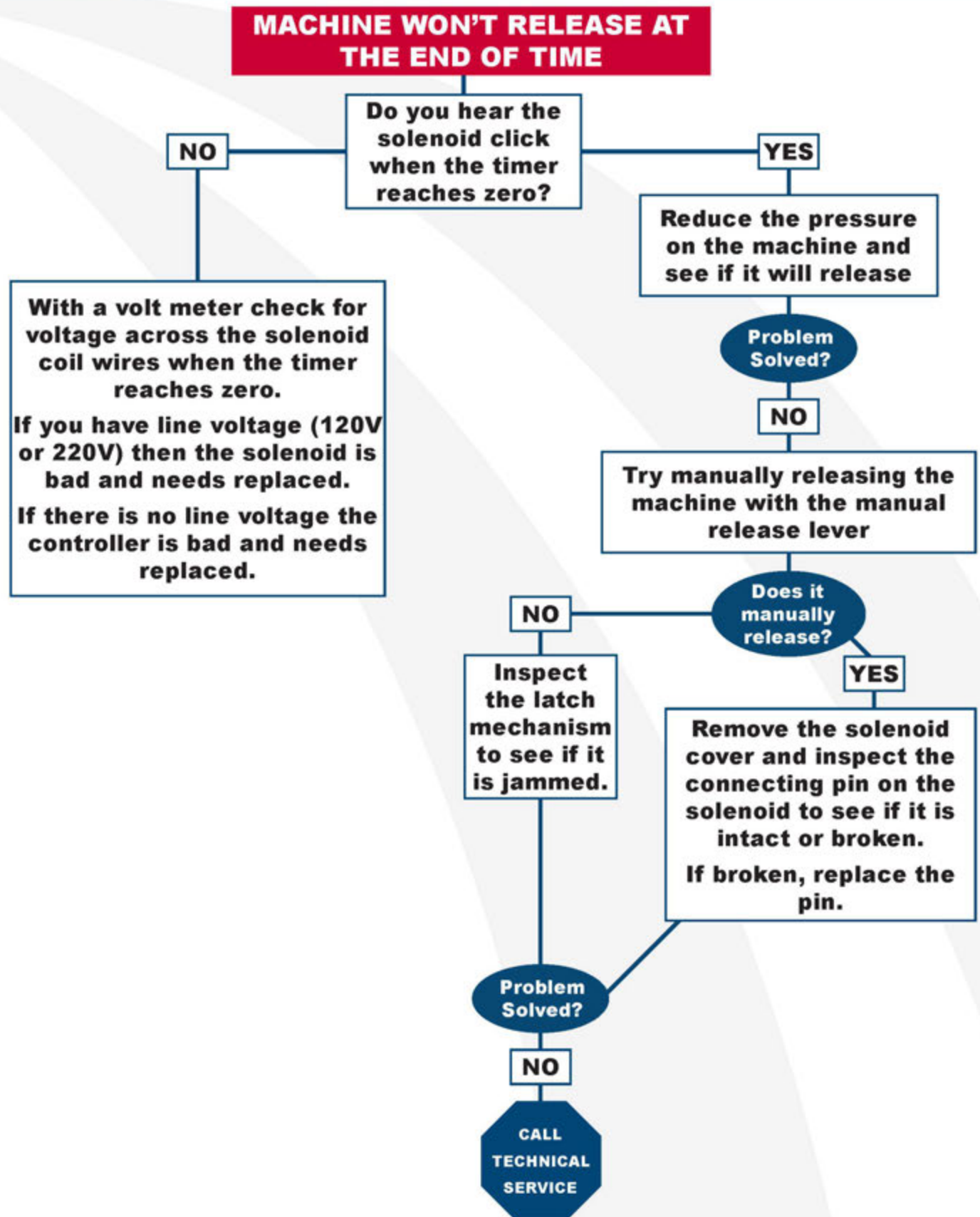
Try increasing the pressure

Problem Solved?

NO

CALL
TECHNICAL
SERVICE

TROUBLESHOOTING



REPAIRS

RELAY BYPASS:

WARNING: Before making repairs, be sure ON/OFF switch is OFF and machine is unplugged!

1. Remove the back cover of the machine.

WARNING: To prevent possible electrical shock, unplug the machine before removing cover to service.

2. Remove wire #26 from terminal #2 on relay.
3. Loosen terminal #1 on relay and attach wire #26 along with wire #12 under terminal #1.
4. Tighten the connection.
5. Plug machine in and turn the power switch on.

NOTE: Replace the relay if the machine starts heating. This is a test only. Do not operate machine with relay bypassed.

MAINTENANCE

LUBRICATION:

Your press requires lubrication every 15,000 cycles or every 6 months.

Lubricate weekly in a heavy use production environment.

Use NSF/NLG12 rated food grade grease (such as Bel-Ray No-Tox #2 or equivalent).

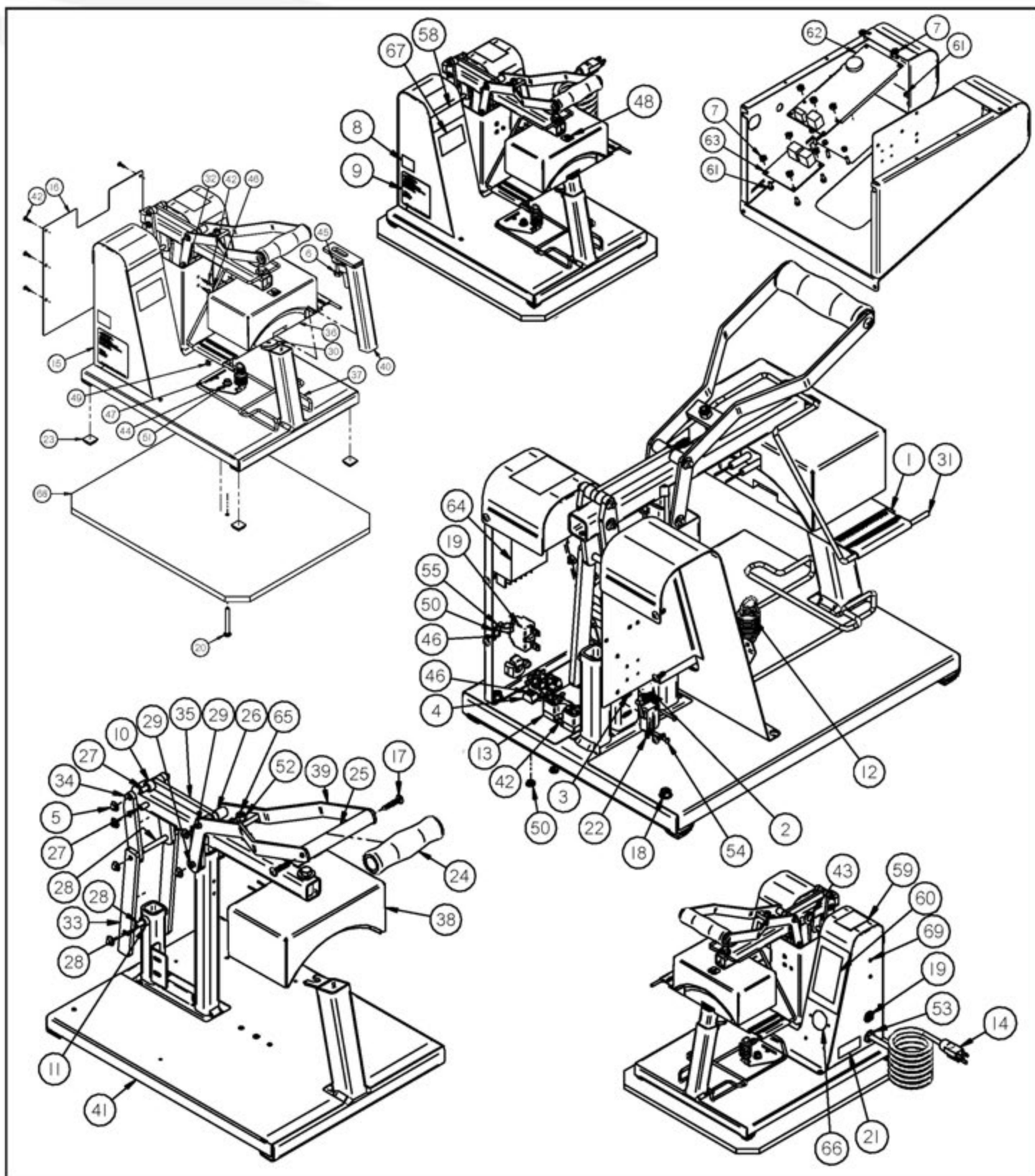
A general purpose food grade machine oil spray is also acceptable such as CRC03055 lubricant (available from retailers such as Amazon).

Lubricate all moving or hinged points.

CLEANING HEAT PLATEN:

Clean the heat platen with steel wool, scrubbing aluminum sponge, or fine wire brush.

REPLACEMENT PARTS LIST (B-250 MODEL)

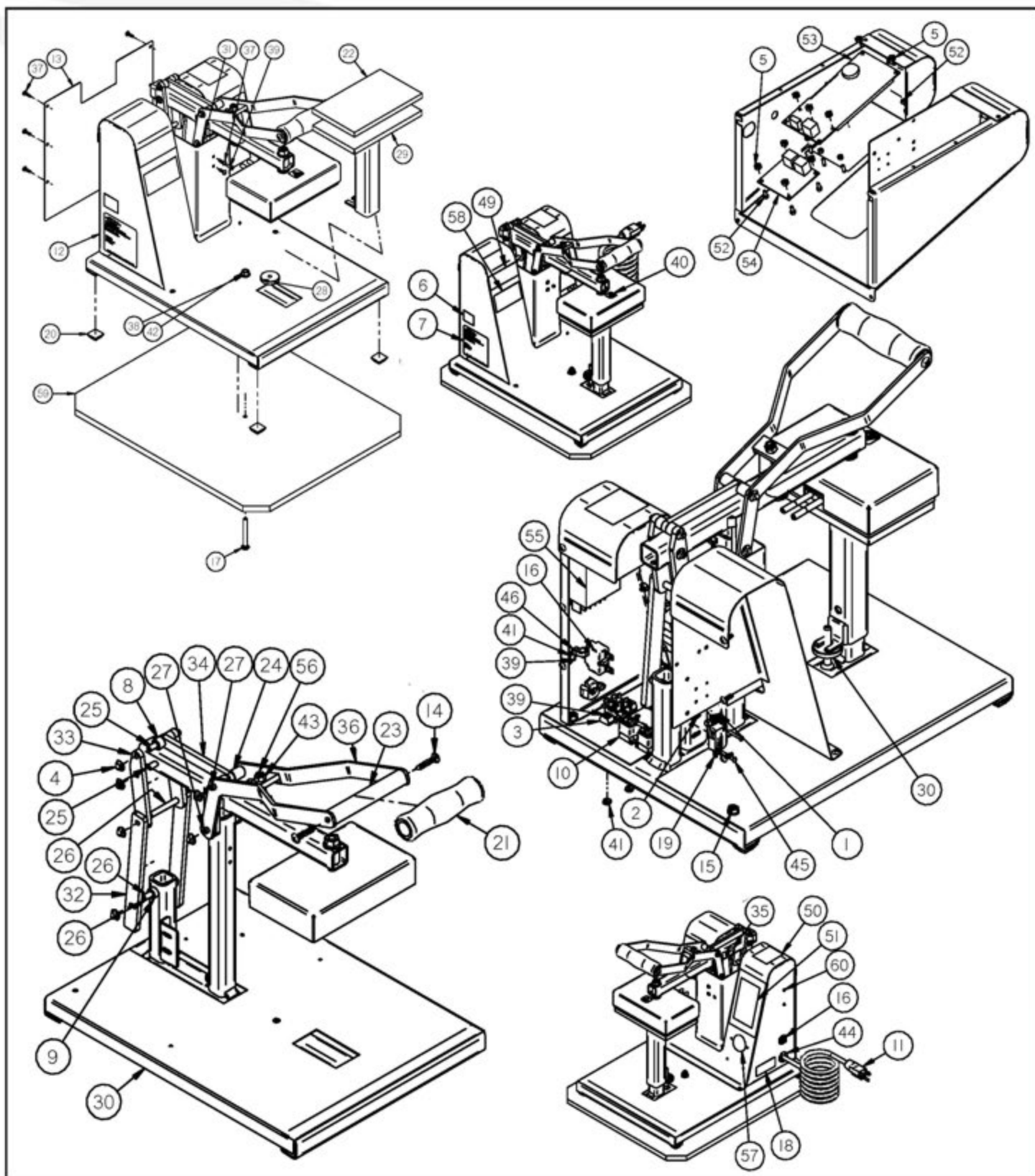


REPLACEMENT PARTS LIST

(B-250 MODEL)

ITEM#	PART#	TITLE	ITEM#	PART#	TITLE
1*	88112	BOXHT CAP MACHINE PAD	55	14712	NUT PUSH 3/16
2*	83865	CASTING W/PAD 2-3/4X5-1/4 YTH	56	14621	NUT 6-32 ZPS
3	82131	BLANKET C/VH-250 11"	57	14548	NUT 1/4-20 ZPS
4	81901	SPRING JONES #91 LATE250	58	14514	NUT 1/4-20 NYLON INSERT ZPS
5	81224	NUT 4-40 ZPS	59	13250	CORD GRIP HEYCO 1557 RDD201
6	72223	TERM BD 601-2-KT37, 38,39	60	13103	SCREW MCH 4-40x0.750 RHSL
7	71654	NUT PUSH 1/4	61	11551	CABLE TIE MNT-150 7-31/32
8*	71621	BOXHT CAP MACHINE LINER	62*	11381	MANUAL, B-250 / FH-3000 4.3" CLCD
9*	71613	BOXHT CAP MACHINE	63*	11375	WIRE KIT, B-250 4.3" CLCD 120V
10	71498	BOLT 5/16-18x0.750 G8	64	11349	NUT 6-32 EXT TOOTH LOCK ZPS SMALL
11	70861	NUT 6-32 NYLON INSERT ZPS	65*	11048	BOX 9X6X4
12	70732	DECAL HIX LOGO 4"x1"	66	11024	DECAL, EVO TOUCH
13	70362	DECAL, CERTIFIED GREEN	67*	10964	DECAL, QR CODE HTM
14	70268	DECAL HIX I.D. 3" X 3" SILVER	68	10916	DECAL, 4.3" COLOR LCD DISPLAY
15	70222	B-250 SPACER 2 .250 IDX.500 OD X .375	69	10914	SPACER .140 X .250 X .125 NYLON
16	70221	B-250 SPACER 1 .250 IDX.500 OD X .250	70	10911	CONTROL DISPLAY BD 4.3" COLOR LONG
17	64808	SPRING HIX #H-612	71	10910	I/O BOARD ANTRONICS
18	62731	RELAY SS 25A 3-32VDC INPUT	72	10903	POWER SUPPLY 15W 5VDC 3A
19	60590	CORDSET 120v 18/3 SJOW 5-15P	73	10686	BOLT 1/4-20x1.250
20	6001033	ENCLOSURE B-250 4.3" CLCD ELEC BLUE	74	10664	DECAL MADE IN USA
21	6001006	BACK COVER 400/600 DM18	75	10135	DECAL, B-250
22	59816	SCREW TAP 14x1.250 PHPH	76	0101007	MOUNTING BOARD B-250
23	50181	SCREW TAP 1/4-20x0.500 WHHX	77	10909	SCREW MCH M3-0.5X3 PHP ZPS
24	47488	CIRCUIT BKR 1-POLE PTR 5 AMP			
25	37117	BOLT, CARRIAGE 1/4X2-1/4 ZP			
26	33605	DECAL, UNPLUG MACHINE			
27	31823	SWITCH MICRO SMALL SEMI-HOOK			
28	28010	BUMPON BLACK .81"x.30"			
29	26840	HANDLE GRIP 3/4" FOAM BLK			
30	2507074	GENERIC HTM HANDLE			
31	2505078	B-250 SPACER 4 .250 IDX.500 OD X .625			
32	2505007	PIN, LINKAGE SHORT			
33	2505006	PIN, LINKAGE LONG			
34	2505005	PIN, LINKAGE MEDIUM			
35	2505004	ADJUSTMENT KNOB B-250			
36	2502213	BLANKET HOLDER B-250			
37	2502110	CENTER COVER			
38	2502109	B-250 MIDDLE LINK			
39	2502106	B-250 UPPER LINK			
40	2502102	B-250 HANDLE LINK			
41	2500950	ASSEMBLY, PLATEN PAD			
42	2500675	ASSY., BRACKET CAP			
43	2500016	ASSY. B-250 HEAT HEAD 120V 4.3" CLCD			
44	2500007	WELDMENT, HANDLE B-250			
45	2500005	WELDMENT, PLATEN FRAME			
46	2500001	B-250 FRAME WELDMENT			
47	21482	SCREW TAP 8x0.500 PHPH			
48*	17841	CASTING W/PAD 3-3/4X5-7/8 BALL			
49	17301	GROMMET .563IDx.750 GRVx.063			
50	16774	WASHER FLT .281 X 0.625 X .063 ZPS			
51	16683	WASHER FLT .375x0.875x.078 ZPS			
52	15297	SCREW MCH 6-32x0.500 PHPH			
53	15107	RIVET POP 1/8 .188-.250 STL			
54	14910	DECAL HOT SURFACE SYMBOL			

REPLACEMENT PARTS LIST (FH-3000 MODEL)



REPLACEMENT PARTS LIST

(FH-3000 MODEL)

ITEM#	PART#	TITLE	ITEM#	PART#	TITLE
1	81901	SPRING JONES #91 LATE250	55	10916	DECAL, 4.3" COLOR LCD DISPLAY
2	81224	NUT 4-40 ZPS	56	10914	SPACER .140 X .250 X .125 NYLON
3	72223	TERM BD 601-2-KT37, 38,39	57	10911	CONTROL DISPLAY BD 4.3" COLOR LONG
4	71654	NUT PUSH 1/4	58	10910	I/O BOARD ANTRONICS
5*	71621	BOXHT CAP MACHINE LINER	59	10903	POWER SUPPLY 15W 5VDC 3A
6*	71613	BOXHT CAP MACHINE	60	10686	BOLT 1/4-20x1.250
7	70861	NUT 6-32 NYLON INSERT ZPS	61	10664	DECAL MADE IN USA
8	70732	DECAL HIX LOGO 4"x1"	63	0101007	MOUNTING BOARD B-250
9	70362	DECAL, CERTIFIED GREEN	64	10909	SCREW MCH M3-0.5X3 PHP ZPS
10	70268	DECAL HIX I.D. 3" X 3" SILVER			
11	70222	B-250 SPACER 2 .250 IDX.500 OD X .375			
12	70221	B-250 SPACER 1 .250 IDX.500 OD X .250			
13	62731	RELAY SS 25A 3-32VDC INPUT			
14	60590	CORDSET 120v 18/3 SJOW 5-15P			
15	6001033	ENCLOSURE B-250 4.3" CLCD ELEC BLUE			
16	6001006	BACK COVER 400/600 DM18			
17	59816	SCREW TAP 14x1.250 PHPH			
18	50181	SCREW TAP 1/4-20x0.500 WHHX			
19	47488	CIRCUIT BKR 1-POLE PTR 5 AMP			
20	37117	BOLT, CARRIAGE 1/4X2-1/4 ZP			
21	33605	DECAL, UNPLUG MACHINE			
22	31823	SWITCH MICRO SMALL SEMI-HOOK			
23	28010	BUMPON BLACK .81"x.30"			
24	26840	HANDLE GRIP 3/4" FOAM BLK			
25	2508011	PAD, LOWER PLATEN FH-3000			
26	2507074	GENERIC HTM HANDLE			
27	2505078	B-250 SPACER 4 .250 IDX.500 OD X .625			
28	2505007	PIN, LINKAGE SHORT			
29	2505006	PIN, LINKAGE LONG			
30	2505005	PIN, LINKAGE MEDIUM			
31	2505004	ADJUSTMENT KNOB B-250			
32	2502205	ASSEMBLY PLATEN FRAME			
33	2502201	FH-3000 FRAME WELDMENT			
34	2502110	CENTER COVER			
35	2502109	B-250 MIDDLE LINK			
36	2502106	B-250 UPPER LINK			
37	2502102	B-250 HANDLE LINK			
38	2500031	ASSY. FH-3000 HEAT HEAD 120V 4.3"			
39	2500007	WELDMENT, HANDLE B-250			
40	21482	SCREW TAP 8x0.500 PHPH			
41	16774	WASHER FLT .281 X 0.625 X .063 ZPS			
42	15297	SCREW MCH 6-32x0.500 PHPH			
43	14910	DECAL HOT SURFACE SYMBOL			
44	14621	NUT 6-32 ZPS			
45	14548	NUT 1/4-20 ZPS			
46	14514	NUT 1/4-20 NYLON INSERT ZPS			
47	13250	CORD GRIP HEYCO 1557 RDD201			
48	13103	SCREW MCH 4-40x0.750 RHSL			
49	11551	CABLE TIE MNT-150 7-31/32			
50*	11381	MANUAL, B-250 / FH-3000 4.3" CLCD			
51*	11375	WIRE KIT, B-250 4.3" CLCD 120V			
52	11349	NUT 6-32 EXT TOOTH LOCK ZPS SMALL			
53	11024	DECAL, EVO TOUCH			
54*	10964	DECAL, QR CODE HTM			

WARRANTY

BEFORE warranty repair you MUST get Prior Authorization: Call 1-800-835-0606 Warranty will be voided otherwise.

(Effective 9/1/2021)

HIX® Corporation (HIX) will automatically register the equipment on the date it was shipped to you or your distributor. If the equipment was not purchased directly from HIX, but through a distributor, please keep a copy of their sales invoice showing the serial number and date it was sold/shipped to you with this warranty. In this case, we will use the distributor's invoice date as the beginning warranty date. **STAPLE A COPY OF YOUR PROOF OF PURCHASE TO THIS WARRANTY** and keep in a safe place to provide verification of your warranty should a problem occur. Thank you.

Please fill in the following information and attach a copy of your receipt for your records.

Date Purchased: _____ **From:** _____
Model #: _____ **Serial #:** _____

This warranty applies to Graphics equipment manufactured by the HIX® Corporation (HIX), Pittsburg, Kansas, U.S.A. HIX warrants to the original purchaser, its Heat Transfer Machines, Ovens and Dryers, Printers, Spotheaters and Exposure Units, against defects in workmanship and material, except for wear and tear for a period of "One Year" from the date of purchase. HIX warrants Accessories for a period of 90 days from the date of purchase. doughXpress® products are covered under separate warranty.

In the event of a defect, HIX, at its option, will repair, replace or substitute the defective item at no cost during this warranty period subject to the limitations of insurance and shipping costs stated below (excludes labor).

In the case of heat transfer presses (except the Hobby Lite® and Large Format presses), HIX warrants the heat casting for the "Life" of the machine for the original purchaser. If a part becomes obsolete at the time for repair, and/or cannot be reasonably substituted for, HIX will credit, at half the then current list price or last recorded price, only that part toward a new machine or any product HIX offers. This credit offer shall be the sole responsibility of the HIX in the event of an obsolete part.

This warranty does not cover belts, rail tape, pads, mug wraps, canvas, rubber blankets, bulbs, glass. Warranty does not cover damages due to accident, misuse/abuse, alterations or damage due to neglect, shipping or lack of proper lubrication or maintenance. HIX shall not be responsible for repairs or alterations made by any person without the prior written authorization by HIX. This warranty is the sole and exclusive warranty of HIX and no person, agent, distributor, or dealer of HIX is authorized to change, amend or modify the terms set forth herein, in whole or in part.

In the case of a problem with the equipment identified herein, HIX should be contacted during regular business hours to discuss the problem and verify an existing warranty. HIX personnel will assist the customer to correct any problems which can be corrected through operation or maintenance instructions, simple mechanical adjustments, or replacement of parts. In the event the problem cannot be corrected by phone, and upon the issuance of a return authorization by HIX, the equipment shall be returned to HIX or an authorized service representative. All insurance, packaging and shipment/freight costs are solely the responsibility of the customer, and not that of HIX, and HIX shall not be responsible for improper packaging, handling or damage in transit. Contact HIX customer service for complete return authorization information. Correct shipping boxes are available from HIX.

This expressed warranty is given in lieu of any and all other warranties, whether expressed or implied, including but not limited to those of merchantability and fitness for a particular purpose, and constitutes the only warranty made by HIX.

In no event shall HIX's liability for breach of warranty extend beyond the obligation to repair or replace the nonconforming goods. HIX shall not be liable for any other damages, either incidental or consequential, or the action as brought in contract, negligence or otherwise.

This warranty gives you specific legal rights and you may also have other rights which vary from state to state.



1201 E. 27th Terrace • Pittsburg, KS 66762 • U.S.A.

Phone: (800) 835-0606 • Fax: (620) 231-1598

Web site: hixcorp.com • E-Mail: support@hixcorp.com