

OPERATOR'S MANUAL

Flash Spot Cures

Premier-1818 & VS-1818

HIXPremier



Premier-1818



VS-1818

For Customer Service:
Call **1-800-835-0606** or Visit ***hixcorp.com***

HIX CORPORATION



CONTENTS

<i>Receiving & Setup</i>	3
<i>Quick Start Guide</i>	3
<i>Home Screen</i>	4
<i>Time & Temp. Adjustments</i>	5
<i>Settings</i>	6
<i>Presets</i>	7
<i>Cycle Count</i>	9
<i>Preferences & Maintenance</i>	10
<i>Troubleshooting</i>	11
<i>Repairs</i>	13
<i>Parts List</i>	14
<i>Warranty</i>	18

BEFORE warranty repair you MUST get Prior Authorization



RECEIVING & SETUP

WARNING: BEFORE INSTALLATION, BE SURE ON/OFF SWITCH IS OFF AND MACHINE IS UNPLUGGED.

INSTALLATION:

1. Remove the spot heater and its base from the shipping box. Inspect it for damage and report any damage you find to your shipper immediately.
2. Insert pedestal tube into base. Tighten knob at the bottom of base to secure pedestal in place.
3. Place spot heater on top of pedestal tube. Tighten the two knobs to secure spot heater in place.
4. To adjust height, loosen two knobs along the pedestal tube, move tube up or down to desired height and retighten knobs.
5. Remove shipping tape and packing material from spot heater.
6. Install wheels to the base by threading each wheel on the bottom of leg tube.

NOTE: The VS-1818 and Premier-1818 models operate slightly differently than each other when curing. Pay close attention to understand how your model operates.

INITIAL SETUP:

1. Loosen knobs and position the heater head approximately 2" above the curing area and retighten knobs.
2. Turn machine on.
3. Turn Auto/Man switch to Man. (Premier-1818)
4. Turn heat off. (See "settings" on the next page and reduce temperature to minimum setting)
5. Depress foot switch. Heat head will move to curing position. Double check that the heater head position is approximately 2" above the curing area.
6. Depress foot switch. Heater should return to rest position.

QUICK START GUIDE

PREMIER-1818 CONTROLS

1. Turn machine on.
2. Turn auto/manual switch to auto.
3. Set the desired temperature and time as instructed in this manual.

NOTE: Required temperature and time settings will be dependent upon the application requirements. Normal Temperature operating range for most applications is #5 - #7 and 3-5 second dwell time. With the air switch on, the maximum obtainable maintained element temperature is #5. With the air switch off, #7 can be maintained.

4. Wait for the machine to reach your preset temperature by monitoring the display temperature until it matches the set temperature. When the set temperature is reached, the controller will "BEEP" once.
5. Depress the foot switch to begin a cycle; moving the heat platen into the curing position over the printed substrate.
6. When set time has elapsed, the heat head will automatically return to the rest position and timer will reset.

VS-1818 CONTROLS

1. Turn power switch on. Heater will begin heating.
2. Once heater is at heat (15-20 minute warm up time). Swing head manually over the cure position and then back to the rest position when finished.

NOTE: The operator will need to try various times and temperatures in order to find the optimum settings for a particular job. These setting should be recorded in a job manual for future use.

HOME SCREEN

PREMIER-1818 CONTROL PANEL:

AUTO/MANUAL
CYCLE SWITCH

DIGITAL TIME &
TEMPERATURE
CONTROL

CIRCUIT BREAKER

POWER SWITCH



1. Turn on the machine by moving the POWER SWITCH to the "on" position.

Startup/Splash screen is displayed as the controller boots up.

NOTE: The current program number and the software revision of the controller are displayed at startup. (The default settings are program number P 19 software revision RV 1.0)



Startup/Splash Screen

After boot up, the home screen is displayed showing the current heat platen temperature and set cycle time. The heat indicating lamp is represented by the snowflake in the upper left corner of the display. The heat indicating lamp will display anytime the heating element is heating and will cycle on and off after the set temperature is reached to maintain set temperature.

HOME MENU SCREEN

HEAT INDICATING LAMP

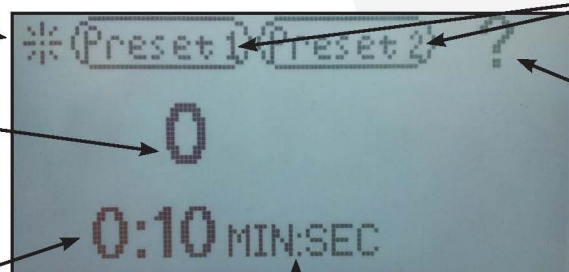
TEMPERATURE
READOUT/SETTING

TIME
READOUT/SETTING

TIME SCALE

MACHINE PRESET BUTTONS

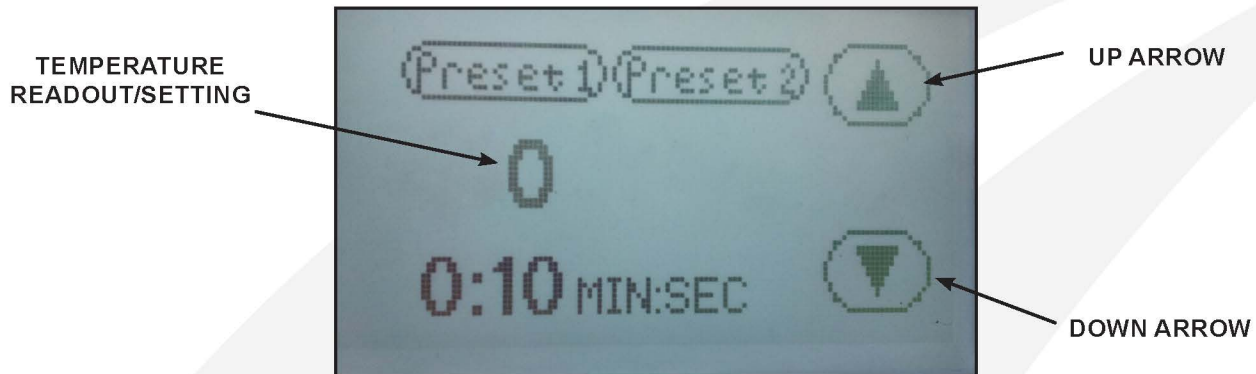
ACCESS
SETTINGS MENU



TIME & TEMPERATURE ADJUSTMENTS

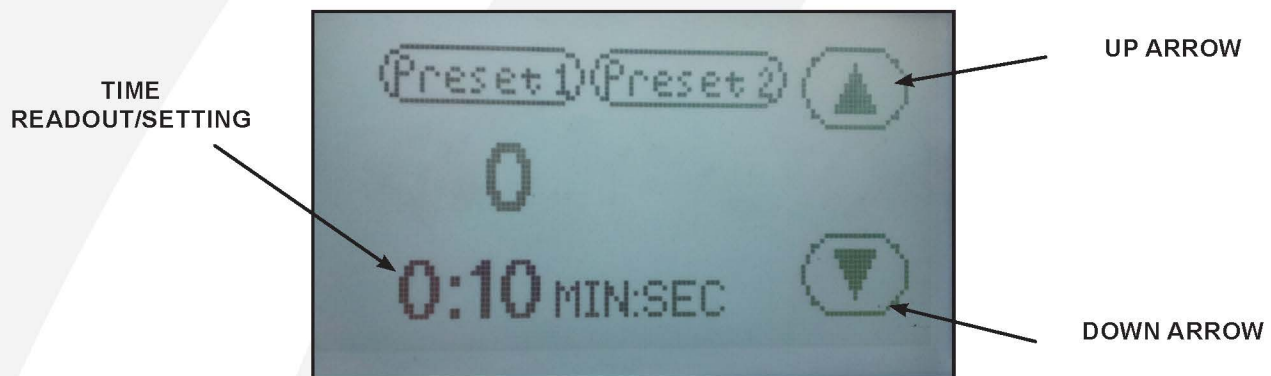
ADJUST TEMPERATURE:

TEMPERATURE ADJUSTMENT SCREEN



1. Touch the temperature readout on the display. "UP" ▲ and "DOWN" ▼ arrows will appear on the right side of the display and the temperature value will start flashing and to indicate it is in set mode.
2. Press the "UP" ▲ or "DOWN" ▼ arrow to change the temperature value. Holding down on an arrow will change the temperature in 1 degree increments for 10 values; then change to 10 degrees incremental changes.
3. Once the desired temperature value is set, either press the temperature value to lock the set temperature or simply wait for 2 seconds and it will lock in the new value automatically.
4. Once the machine reaches the temperature of the set value (between 0-9) the controller will "beep" signaling that the machine is ready to use.

TIME ADJUSTMENT SCREEN



ADJUST CYCLE TIME:

1. Touch the time readout on the display. "UP" ▲ and "DOWN" ▼ arrows will appear on the right side of the display and the cycle time value will start flashing and to indicate it is in set mode.
2. Press the "UP" ▲ or "DOWN" ▼ arrow to change the cycle time value. Holding down on an arrow will change the time in 1 second increments for 5 values; then change to 10 seconds incremental changes.
3. Once the desired cycle time value is set, either press the time readout to lock the cycle time or simply wait for 2 seconds and it will lock in the new value automatically.

SETTINGS

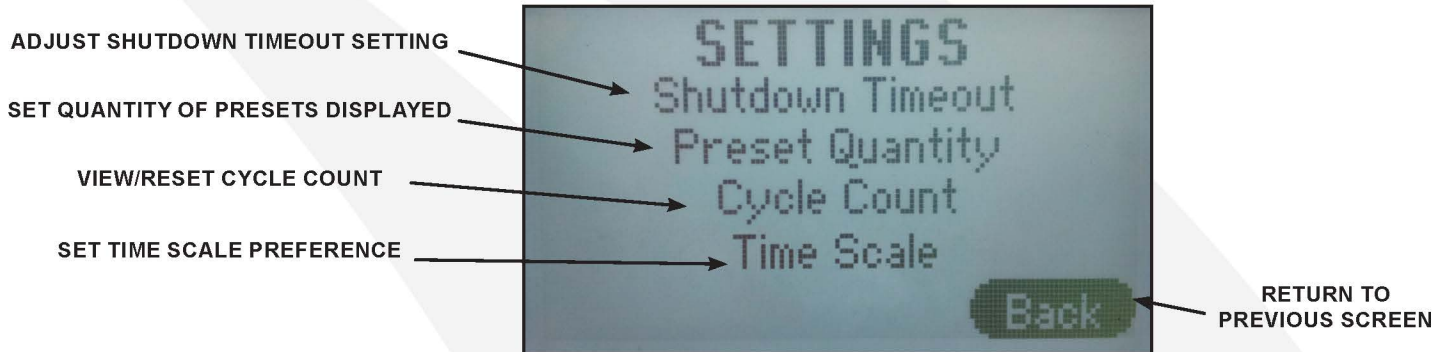
SETTINGS:

1. Press the “?” on the upper right corner of the display on the **Home Menu Screen** to access the settings menu.
2. Press the settings sub menu title to be adjusted.

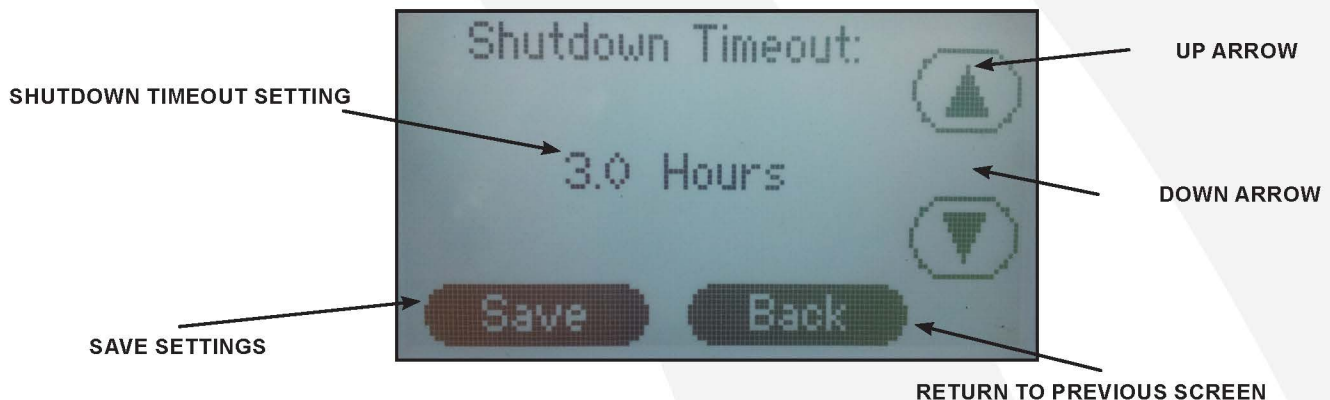
SHUTDOWN TIMEOUT

The shutdown feature shuts off the heat to the press after a period of inactivity.

SETTINGS MENU SCREEN



SHUTDOWN TIMEOUT ADJUSTMENT SCREEN



NOTE: The factory default is set at 3.0 hours.

1. From the settings menu press the “**Shutdown Timeout**” sub menu title.
2. Press the “UP” ▲ and/or “DOWN” ▼ arrows to set the desired shutdown time.

NOTE: Shutdown time adjusts in 1/2 hour intervals. Press the “Down” ▼ button until “Disable” is displayed will deactivate this setting.

3. Press “**Save**” to save the setting.
4. Press “**Back**” to return to the previous screen.

NOTE: After the shutdown time has elapsed with the press idle, the heating element will stop cycling to maintain the set temperature and the home screen will display “**SHUTDOWN.**” Touching the display or closing the press will take the machine out of shutdown mode.

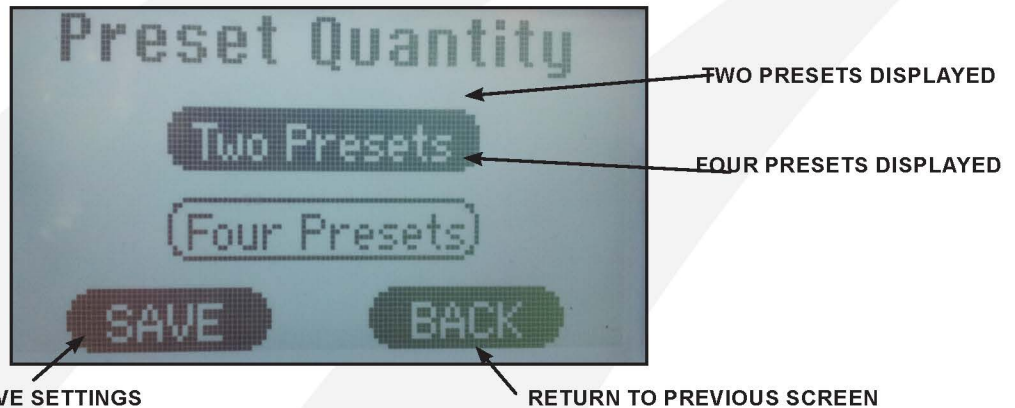
PRESETS

PRESET QUANTITY

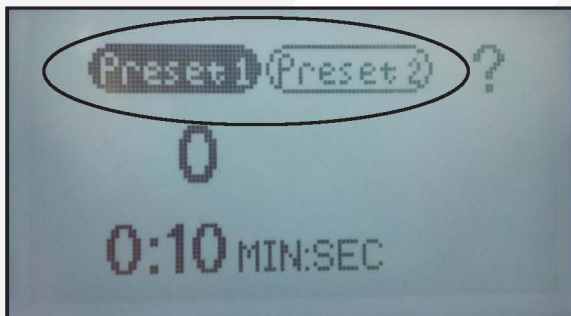
Temperature presets can be stored in the memory for different transfer settings. By default two presets are displayed. This setting can be adjusted to display four presets.

1. From the settings menu press the “**Preset Quantity**” sub menu title.
2. Press the number of presets to be displayed on the home screen, either “**Two Presets**” or “**Four Presets**.”

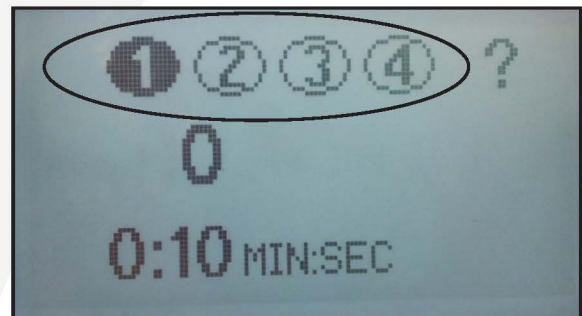
PRESET QUANTITY DISPLAYED PREFERENCE SCREEN



TWO PRESET DISPLAY
ON HOME MENU SCREEN



FOUR PRESET DISPLAY
ON HOME MENU SCREEN



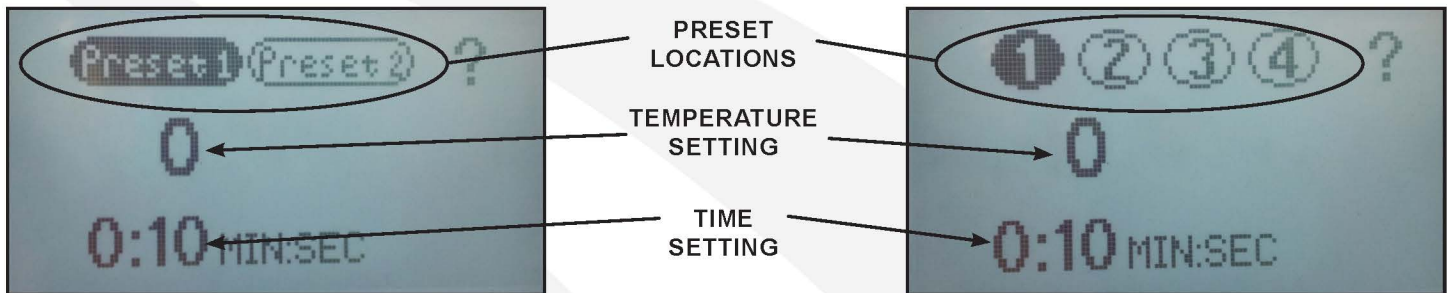
3. Press “**Save**” to save the setting.
4. Press “**Back**” to return to the previous screen.

PRESETS

STORING PRESETS:

NOTE:The factory default settings for all presets is set to 200°F and 10 seconds.

HOME MENU SCREEN

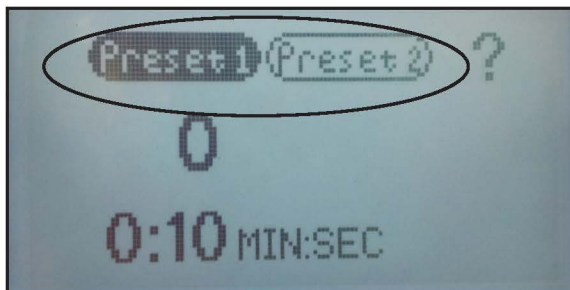


1. Set the desired temperature and/or cycle time using the temperature and time adjustment instructions in this document.
2. Immediately upon changing the time or temperature with the up and down buttons, press the new temperature or time readout again until the controller beeps once. Then press and hold the desired preset location for two seconds. The controller will beep twice and the preset button will display in reverse indicating the preset is stored in memory.

NOTE:Always refer to specific transfer recommendations for temperature, time and pressure as instructed by the transfer manufacturer.



PRESET 1 SELECTED
(two preset setting shown)



PRESET 2 SELECTED
(two preset setting shown)



RECALLING PRESETS:

1. Press and release for approximately 1/2 second the preset button to recall. The controller will beep and the preset location button will display in reverse indicating the preset has been changed.

NOTE:The new set values will display for 1 second before the controller starts adjusting the temperature or time to match the new setpoint.

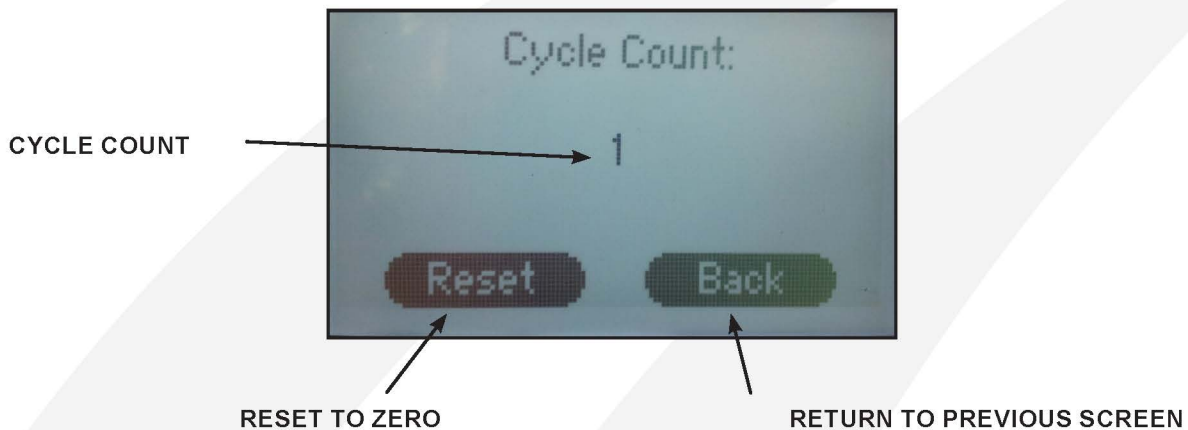
CYCLE COUNT

CYCLE COUNT

The cycle count feature counts the number of cycles that the machine has undergone. A cycle is counted every time the countdown timer is activated by closing the press.

NOTE: The cycle count will maintain the total count even if the power has been turned off.

CYCLE COUNT/CYCLE COUNT RESET SCREEN



TO RESET THE COUNTER:

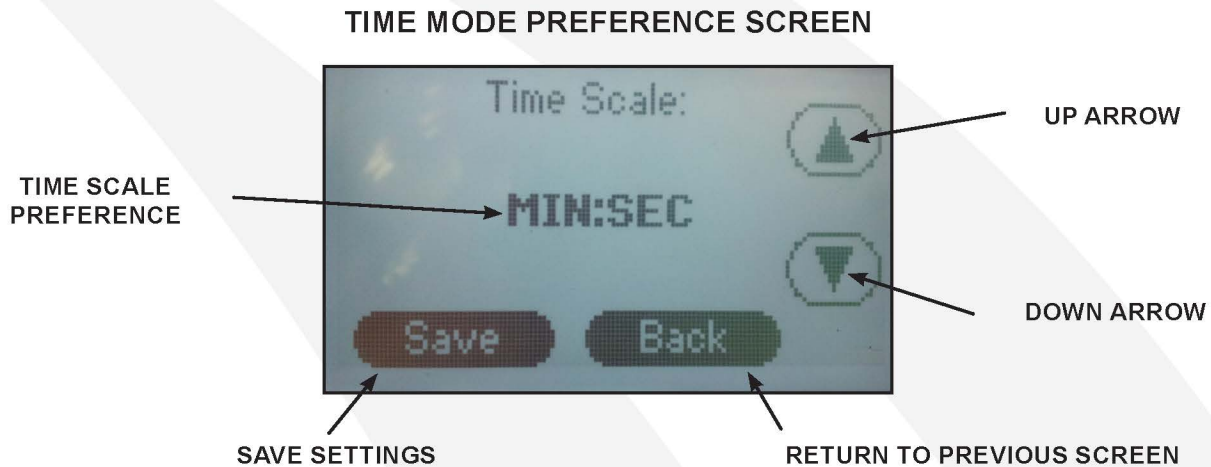
1. From the settings menu press the "**Cycle Count**" sub menu title.
2. Press "**Reset.**"
3. Press "**Back**" to return to the previous screen.

PREFERENCES

TIME SCALE

The time scale setting adjusts how the time is displayed on the home screen. There are three Time Scale display options available in the Time Scale menu:

- **MIN:SEC** (Factory Default)
- **SEC** (Seconds)
- **1/10 SEC** (1/10 Second Resolution)



TO CHANGE THE SCALE:

1. From the settings menu press the "**Time Scale**" sub menu title.
2. Press the "UP" ▲ and/or "DOWN" ▼ arrows to select the preferred time scale.
3. Press "**Save**" to save the setting.
4. Press "**Back**" to return to the previous screen.

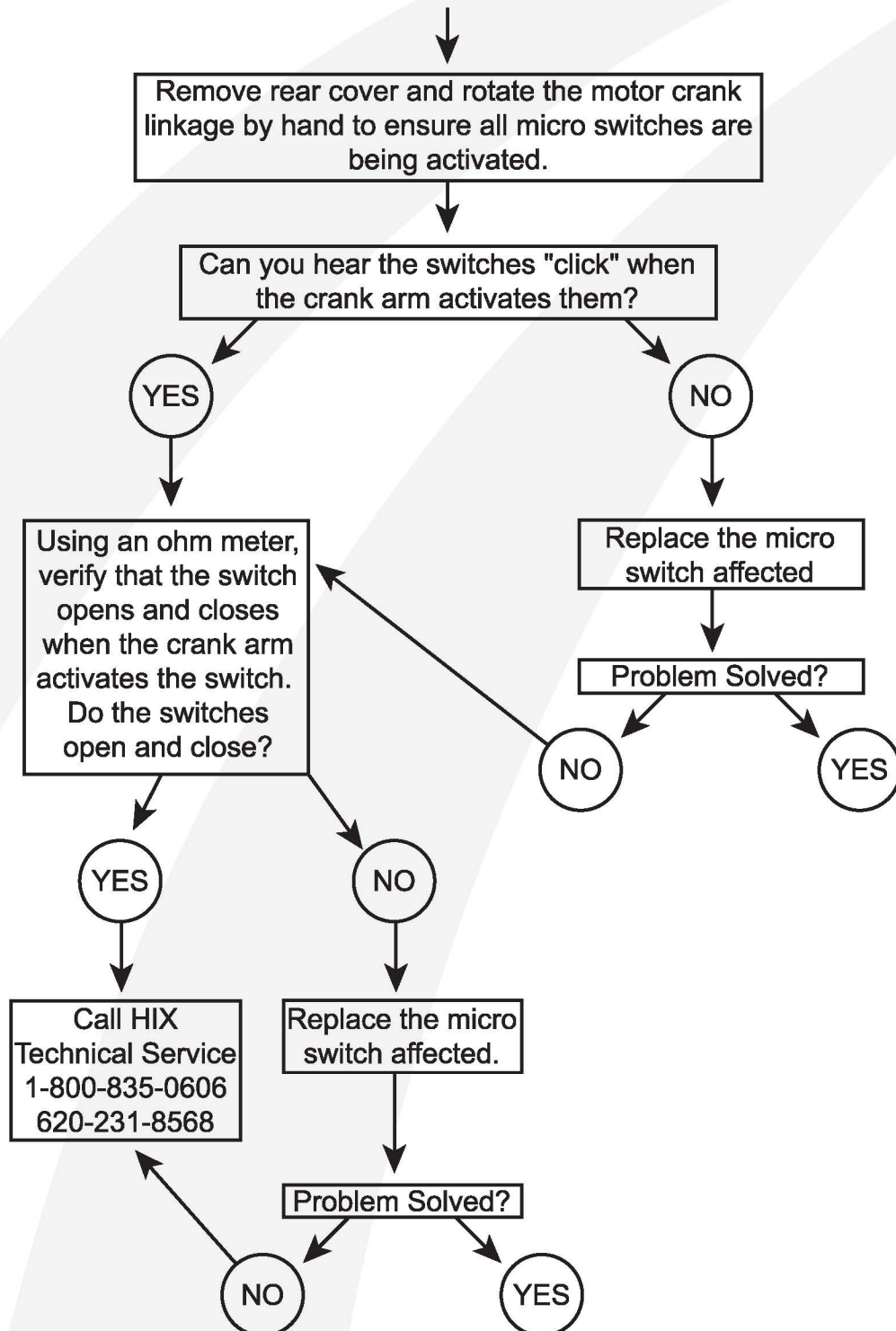
MAINTENANCE

1. Remove back control box cover 2 times each year (every 6 months).
2. Keep your machine clean of buildup.
3. Put two drops of 3:1 oil/sewing machine oil on moving parts of arm/linkage.
4. Replace cover.

TROUBLESHOOTING

WARNING: Before making repairs, be sure on/off switch is off and machine is unplugged!

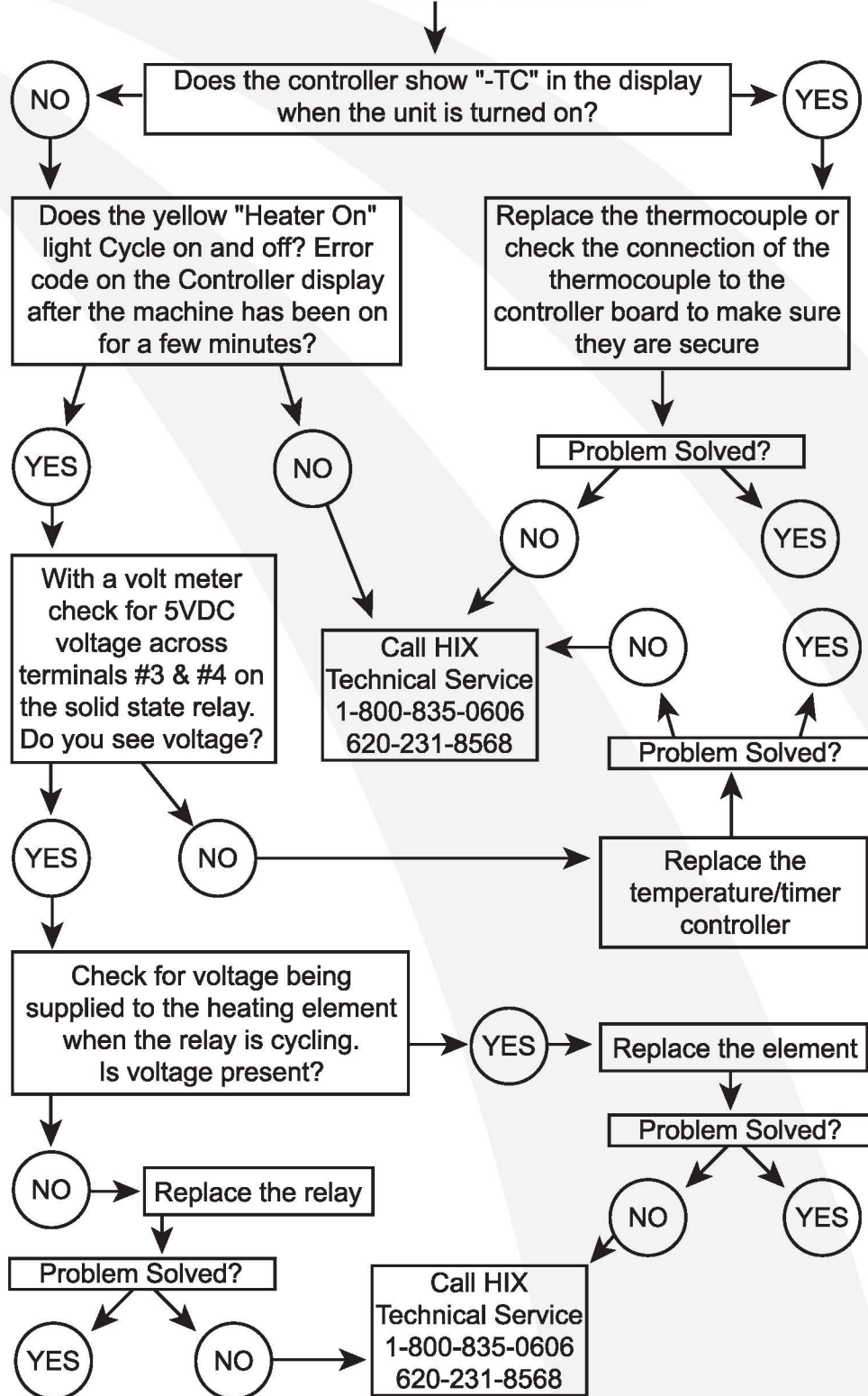
HEAT HEAD RUNS CONTINUOUSLY AND WILL NOT STOP IN CURE OR REST POSITION



TROUBLESHOOTING

WARNING: Before making repairs, be sure on/off switch is off and machine is unplugged!

MACHINE IS NOT HEATING



REPAIRS

SWITCH ON/OFF REPLACEMENT:

WARNING: BEFORE MAKING REPAIRS, BE SURE ON/OFF SWITCH IS OFF AND MACHINE IS UN-PLUGGED!

1. Remove cover screws and take off cover.
2. Use 9/16" wrench to remove securing nut around switch.
3. Pull switch out from rear.
4. Remove four wires from the switch.

NOTE: Remember wire placement. If in doubt refer to wiring diagram on back of machine cover.

5. Install new switch.

SWITCH ON/OFF BYPASS:

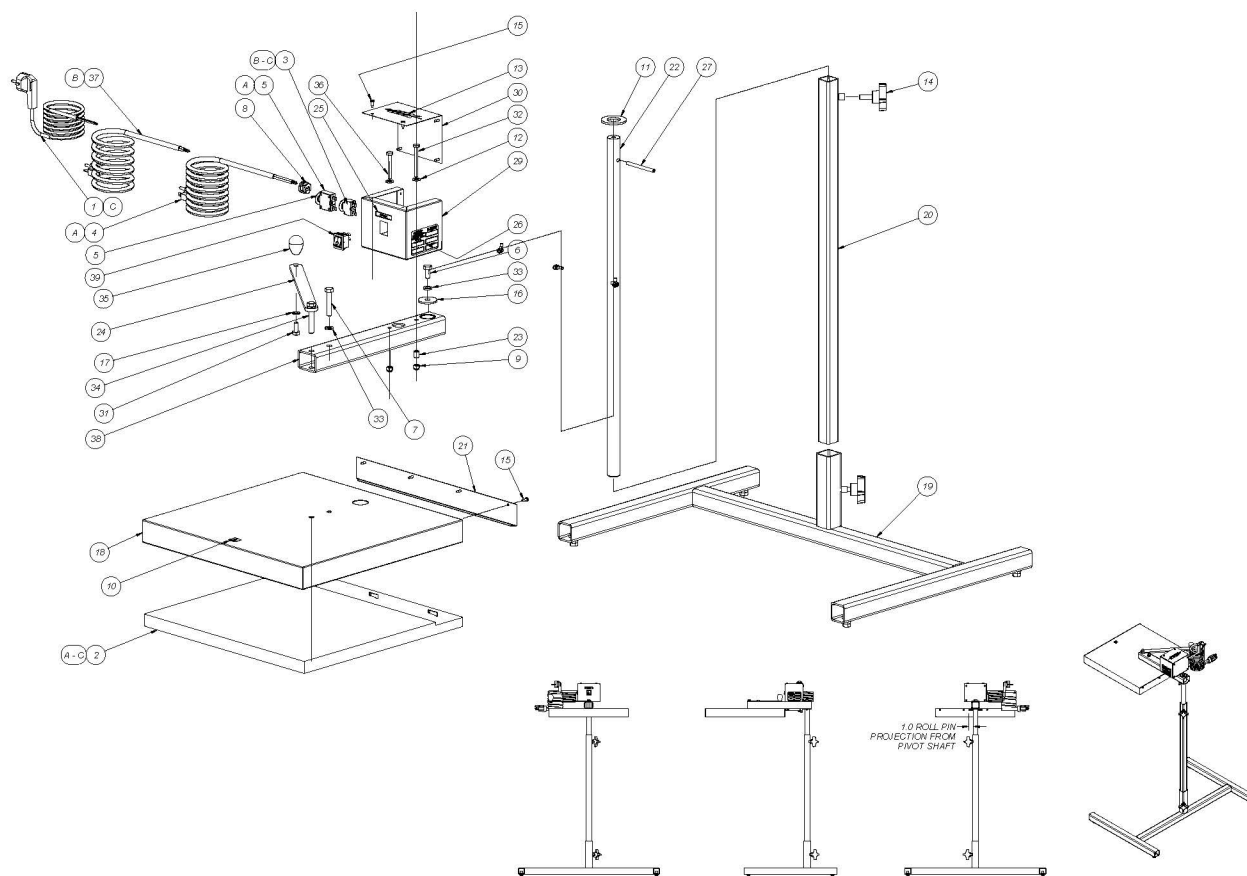
1. Follow steps 1 through 3 in switch replacement.
2. Remove one set of switch wires.
3. Loosen the remaining wire terminals and slip the removed wires under the terminals.
4. Tighten terminal screws.
5. Plug machine back into outlet.
6. If machine functions normally, replace switch.

WARNING: DO NOT CONTINUE TO OPERATE MACHINE WITH SWITCH BYPASSED.

TEMPERATURE/TIME CONTROLLER REPLACEMENT:

1. Disconnect the wiring plug and the thermocouple from the temperature control. Note the placement so that the wires can be replaced correctly.
2. Install new controller.

REPLACEMENT PARTS LIST (VS-1818 MODEL)

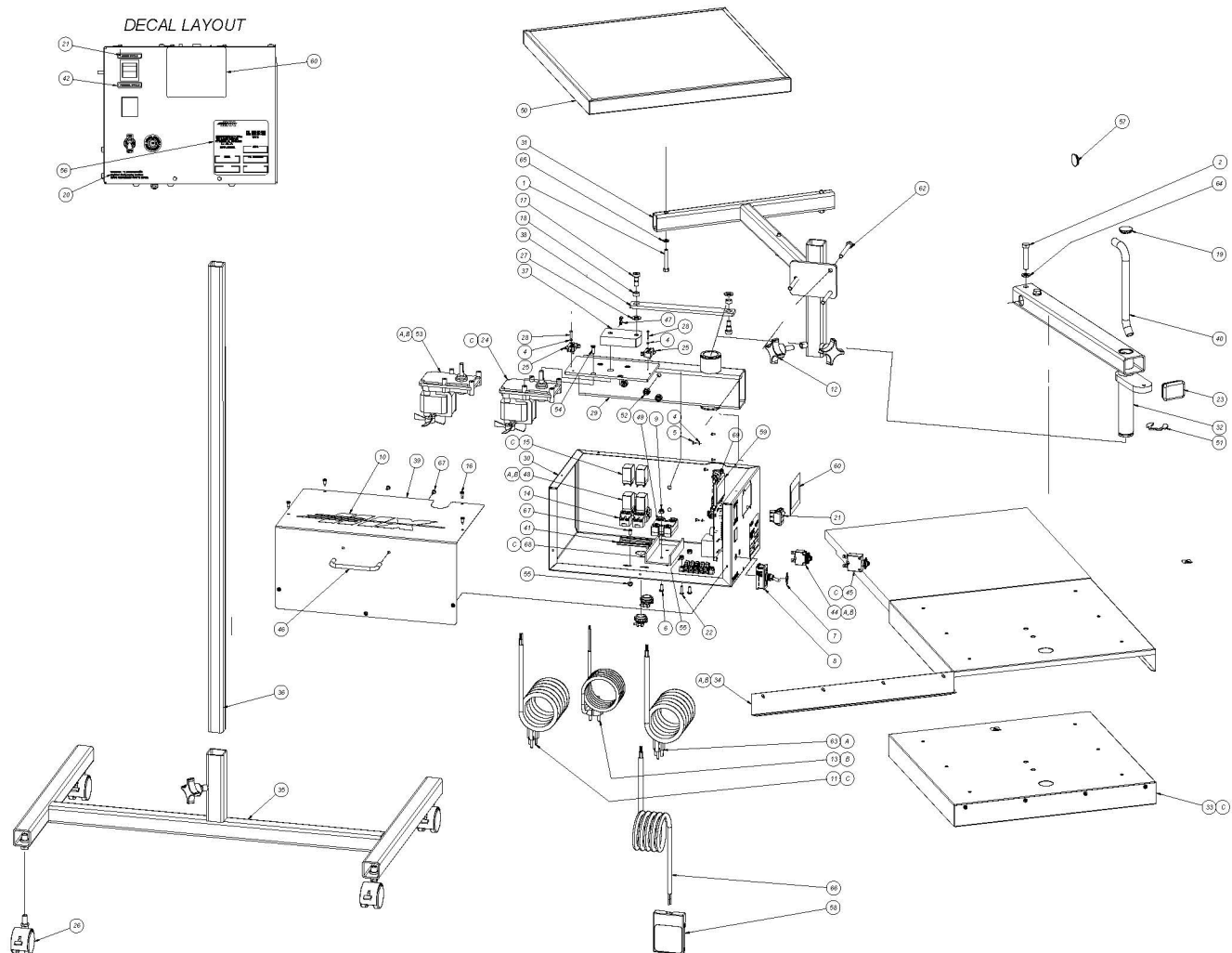


REPLACEMENT PARTS LIST

(VS-1818 MODEL)

ITEM#	PART#	TITLE	ITEM#	PART#	TITLE
1	20028	CORD EURO 10A/250V AAA 1310			
2	70722	HEATER 18X18 SOLAR 120V 2200W			
3	47463	CIRCUIT BKR 1-POLE PTR 15 AMP			
4	19623	CORDSET 120v 14/3 SJOW 5-20P			
5	47501	CIRCUIT BKR 1-POLE PTR 30 AMP			
6	10843	BOLT 3/8-16x0.750			
7	10884	BOLT 3/8-16x2.000			
8	13250	CORD GRIP HEYCO 1857 RDD201			
9	14514	NUT GREER 1/4-20 21NE420			
10	14910	DECAL HOT SURFACE SYMBOL			
11	16674	WASHER FLT 1.06x2.00x.160 ZPS			
12	16774	WASHER FLT .281x0.625x.063 ZPS			
13	19348	DECAL HIX LOGO			
14	19739	KNOB 3/8-16x1.0 STUD PLASTIC			
15	21482	SCREW TAP 8x0.500 PHPH			
16	25720	WASHER FLT .406x1.500x.120 ZPS			
17	30910	WASHER LOCK HEL SPR 5/16 ZP			
18	3800600	M-SH HEATSHIELD ASSY NARROW			
19	3800720	M-ASSY LEG SPOTHEATER			
20	3800730	M-ASSY COLUMN			
21	3801603	O-ASH/SH REAR COVER NARROW			
22	3801805	M-PEDESTAL SHAFT			
23	3801806	M-STOP TUBE			
24	3801808	M-HANDLE ARM			
25	39047	DECAL R2R POWER			
26	56839	DECAL HIX I.D. 3" X 2" SILVER			
27	62103	PIN ROLL 1/4x3 SLOTTED			
29	6720010	M-ASSY ENCLOSURE SPOTHEATER			
30	6724412	M-BACK COVER			
31	71498	BOLT 5/16-18x0.750 GR 8			
32	71779	BOLT 1/4-20x2.500 ZP			
33	79418	WASHER LOCK HEL SPR 3/8 ZP			
34	86850	BOLT 3/8-16x2.250			
35	88906	KNOB OVAL 5/16-18			
36	89821	BOLT 1/4-20x2.000			
37	72496	CORDSET 220v 16/3 SJOW 6-15P			
38	3800420	M-ASSY MAIN ARM WELDMENT			
39	37842	SWITCH ROCKER DPST POWER			
74	70674	TERM 12-10 RING 10 NON F			
75	70677	SCREW CPSKT 8-32x0.375 316 SS			
76	70676	NUT HX 8-32 ZPS			

REPLACEMENT PARTS LIST (PREMIER-1818 MODEL)



REPLACEMENT PARTS LIST

(PREMIER-1818 MODEL)

ITEM#	PART#	TITLE	ITEM#	PART#	TITLE
1	10710	BOLT 1/4-20x1.750	55	70129	NUT GREER 8-32 ZPS
2	10884	BOLT 3/8-16x2.000	56	70268	DECAL HIX I.D. 3"x3" SILVER
3	11940	CONNECTOR ROMEX 3/8"	57	70766	PLUG HOLE 7/8"
4	13919	WASHER LOCK HEL SPR #4 ZP	58	70777	SWITCH FOOT T-91-SE
5	14524	SCREW MCH 4-40x0.250 PHPH	59	70976	CONTROL TEMP EM TOUCH-WHOLE
6	15339	SCREW MCH 10-24x0.500 PHPH	60	71089	DECAL, HTC CONTROL
7	16105	SWITCH PLATE 2X642 OFF/ON	61	72249	TERM BD 601-5-KT37,38,39
8	16113	SWITCH ON/OFF EK204-73 TOGGLE	62	72306	BOLT 5/16-18 x 2.750
9	19186	NUT GREER 10-24 ZPS	63	72496	CORDSET 220v 16/3 SJOW 6-15P
10	19356	DECAL HIX LOGO 2-1/2X12-3/4	64	79418	WASHER LOCK HEL SPR 3/8 ZP
11	19631	CORDSET 120v 12/3 SJOW 5-20P	65	79426	WASHER LOCK HEL SPR 1/4 ZP
12	19739	KNOB 3/8-16x1.0 STUD PLASTIC	66	85860	CORD BULK 14/3 SJ
13	20028	CORD EURO 10A/250V AAA 1310	67	89540	SCREW MCH 8-32x0.375 PHPH
14	21326	SOCKET RELAY 8 PIN 2 POLE	68	9011027	M-840 RELAY HEAT SINK
15	21334	RELAY ICE CUBE 2PDT 120V	69	9044419	NYLON STANDOFF FOR EMERSON
16	21482	SCREW TAP 8x0.500 PHPH			CONTROLLER
17	30538	SCREW SHOULDER .375 x .375			
18	30945	BUSHING 3/8X1/2X1/4 SS1216-4			
19	33031	PLUG HOLE 1" ID BLACK			
20	33605	DECAL UNPLUG MACHINE			
21	33811	SWITCH ROCKER DPDT			
22	34592	SCREW MCH 8-32x0.625 PHPH			
23	35393	PLUG, TUBE 1.500x2.000			
24	37052	GEARMOTOR, 6RPM, 115V			
25	37060	SWITCH ROLLER V7-1C13D8-201			
26	37079	CASTER 2" SWIVEL W/BRAKE			
27	37095	WASHER 0.375x0.750x0.063 BRONZE			
28	37125	SCREW MCH 4-40x0.625 RHPH			
29	3800120	M-MAIN FRAME WELDMENT			
30	3800135	CONTROL BASE ASSEMBLY-EMERSON			
31	3800200	M-ASSY SH FRAME WELDMENT			
32	3800300	M-ASSY PIVOT FRAME WELD SPHTR			
33	3800310	P-SH HEATER 120V ASSY NARROW			
34	3800320	P-SH HEATER 220V ASSY NARROW			
35	3800720	M-ASSY LEG SPOTHEATER			
36	3801002	M-RISER TUBE			
37	3801102	SH MOTOR LINK			
38	3801103	M-CONNECTING LINK SPOTHEATER			
39	3801109	M-ENCLOSURE COVER			
40	3801118	M-WIRE ABRASION GUARD			
41	3801809	M-DIN RAIL 2.75			
42	38962	DECAL MANUAL CYCLE			
43	38970	DECAL AUTO CYCLE			
44	47463	CIRCUIT BKR 1-POLE PTR 15 AMP			
45	47501	CIRCUIT BKR 1-POLE PTR 30 AMP			
46	57002	HANDLE 4" ALUM CABINET PULL			
47	57096	SCREW SET 1/4-20x0.375			
48	60042	RELAY ICE CUBE 2PDT 240V			
49	65897	RELAY SS 50A 3-32VDC INPUT			
50	6600140	P-ASH/SH HEATSINK NARROW			
51	66761	RETAINING RING EXT 1.250 PO			
52	68594	NUT GREER 5/16-18 ZPS			
53	70022	GEARMOTOR, 6RPM, 230V			
54	70047	SCREW TAP 10-24x0.750 FHPH			

WARRANTY

BEFORE warranty repair you MUST get Prior Authorization: Call 1-800-835-0606 Warranty will be voided otherwise.

(Effective 9/1/2021)

HIX® Corporation (HIX) will automatically register the equipment on the date it was shipped to you or your distributor. If the equipment was not purchased directly from HIX, but through a distributor, please keep a copy of their sales invoice showing the serial number and date it was sold/shipped to you with this warranty. In this case, we will use the distributor's invoice date as the beginning warranty date. **STAPLE A COPY OF YOUR PROOF OF PURCHASE TO THIS WARRANTY** and keep in a safe place to provide verification of your warranty should a problem occur. Thank you.

Please fill in the following information and attach a copy of your receipt for your records.

Date Purchased: _____ **From:** _____
Model #: _____ **Serial #:** _____

This warranty applies to Graphics equipment manufactured by the HIX® Corporation (HIX), Pittsburg, Kansas, U.S.A. HIX warrants to the original purchaser, its Heat Transfer Machines, Ovens and Dryers, Printers, Spotheaters and Exposure Units, against defects in workmanship and material, except for wear and tear for a period of "One Year" from the date of purchase. HIX warrants Accessories for a period of 90 days from the date of purchase. doughXpress® products are covered under separate warranty.

In the event of a defect, HIX, at its option, will repair, replace or substitute the defective item at no cost during this warranty period subject to the limitations of insurance and shipping costs stated below (excludes labor).

In the case of heat transfer presses (except the Hobby Lite® and Large Format presses), HIX warrants the heat casting for the "Life" of the machine for the original purchaser. If a part becomes obsolete at the time for repair, and/or cannot be reasonably substituted for, HIX will credit, at half the then current list price or last recorded price, only that part toward a new machine or any product HIX offers. This credit offer shall be the sole responsibility of the HIX in the event of an obsolete part.

This warranty does not cover belts, rail tape, pads, mug wraps, canvas, rubber blankets, bulbs, glass. Warranty does not cover damages due to accident, misuse/abuse, alterations or damage due to neglect, shipping or lack of proper lubrication or maintenance. HIX shall not be responsible for repairs or alterations made by any person without the prior written authorization by HIX. This warranty is the sole and exclusive warranty of HIX and no person, agent, distributor, or dealer of HIX is authorized to change, amend or modify the terms set forth herein, in whole or in part.

In the case of a problem with the equipment identified herein, HIX should be contacted during regular business hours to discuss the problem and verify an existing warranty. HIX personnel will assist the customer to correct any problems which can be corrected through operation or maintenance instructions, simple mechanical adjustments, or replacement of parts. In the event the problem cannot be corrected by phone, and upon the issuance of a return authorization by HIX, the equipment shall be returned to HIX or an authorized service representative. All insurance, packaging and shipment/freight costs are solely the responsibility of the customer, and not that of HIX, and HIX shall not be responsible for improper packaging, handling or damage in transit. Contact HIX customer service for complete return authorization information. Correct shipping boxes are available from HIX.

This expressed warranty is given in lieu of any and all other warranties, whether expressed or implied, including but not limited to those of merchantability and fitness for a particular purpose, and constitutes the only warranty made by HIX.

In no event shall HIX's liability for breach of warranty extend beyond the obligation to repair or replace the nonconforming goods. HIX shall not be liable for any other damages, either incidental or consequential, or the action as brought in contract, negligence or otherwise.

This warranty gives you specific legal rights and you may also have other rights which vary from state to state.



1201 E. 27th Terrace • Pittsburg, KS 66762 • U.S.A.

Phone: (800) 835-0606 • Fax: (620) 231-1598

Web site: hixcorp.com • E-Mail: support@hixcorp.com